

Seniors and People with Disabilities (SPD)

The SPD mission is to make it possible to become independent, healthy and safe. SPD contributes to the DHS mission by helping seniors and people with disabilities of all ages achieve well-being through opportunities for community living, employment, family support and services that promote independence, choice and dignity.

SPD has three program areas:

- Services to Seniors and People with Physical Disabilities
- Services to People with Developmental Disabilities
- Program Support

**Oregon Department of Human Resources
Seniors and People with Disabilities**

500 Summer Street NE

Salem, Oregon 97301

Phone: 800-282-8096

Overview

Services to Seniors and People with Physical Disabilities

- **Direct financial support**
 - Medicare buy-in programs
 - Special-needs payments
- **Long-term services**
 - ◆ **In-home services**
 - Adult day services
 - Home-delivered meals
 - Medicaid client-employed home care workers
 - Medicaid Independent Choices
 - Oregon Project Independence
 - Personal care
 - Specialized living services
 - ◆ **Community-based care facilities**
 - Adult foster homes
 - Assisted living
 - Enhanced care
 - Residential care
 - Program of All-inclusive Care for the Elderly (PACE)
 - ◆ **Nursing facilities**

Services to Seniors 60 and Older through the Older Americans Act

- Elder abuse prevention
- Family caregiver support
- Legal issues
- Medication management
- Nutrition services
- Senior employment
- Support services

Services to People with Developmental Disabilities

- **Long-term services**
 - ◆ **Comprehensive services**
 - Adult in-home services
 - Adult residential group homes
 - Children's intensive in-home services
 - Children's residential group homes and proctor homes
 - Diversion and crisis services
 - Non-relative foster care for children and adults
 - State-operated community programs
 - Supported living services
 - Vocational services
 - ◆ **Support services**
 - Adult support services
 - Family support services
 - Long-term support for children with developmental disabilities

Program Support

- Office of Developmental Disability Services
- Office of Federal Resource and Financial Eligibility
- Office of Licensing and Quality of Care
- Office of Senior and Disability Services

- Eligibility for Medicaid and other state and federal benefits determined throughout the state by DHS local offices and Area Agencies on Aging offices;
- Disability decisions for Oregon Health Plan Plus determined by Presumptive Medicaid Disability Determination Team;
- Case management services for seniors and people with physical disabilities delivered through DHS local offices and Area Agencies on Aging offices;
- Older Americans Act programs delivered through Area Agencies on Aging offices;
- In-home services delivered in the client employers' home by home care workers and in-home agencies;
- Nursing and community-based care services delivered in nursing, assisted living, residential and foster care settings, as well as in clients' homes;
- Disability Determination Services (SSA Title II and XVI) delivered in a central office;
- Eligibility for Medicare Savings Programs which pays for Medicare premiums for elderly persons with disabilities including blindness;
- Eligibility for developmental disabilities services determined by Community Developmental Disabilities Programs;
- Case management for children and adults with developmental disabilities provided by Community Developmental Disabilities Programs;
- Family support for children with developmental disabilities delivered by support service brokerages;
- Support services for adults with developmental disabilities delivered by support service brokerages;
- Community-based care services for children and adults with developmental disabilities provided by private agencies, foster care and state-operated community programs;
- Ongoing services for job support and other activities.

During the current biennium, SPD — either directly or through partners — provides the following services to Oregonians:

Numbers

- Approximately 114,000 seniors and people with disabilities received medical coverage and/or food stamps.
- Approximately 27,900 seniors and people with physical disabilities received services that helped these individuals meet their activities of daily living needs, also known as service priority levels.
- 3,612 people age 60 and older maintained their independence through services provided under Oregon Project Independence.
- Older Americans Act services, developed to meet the needs of local seniors, were used by more than 323,000 people.
- More than 20,000 Oregonians benefited from protective services.
- Almost 19,000 people with developmental disabilities were assisted through support services, 24-hour programs or case management services.
- Approximately 13,700 adults with developmental disabilities received services.
- Approximately 5,300 children with developmental disabilities received services.
- More than 85,000 aged and disabled Oregonians have Medicare premiums paid each month (Part B).
- More than 5,000 facilities were licensed/certified. These included adult foster homes, assisted living facilities, residential care facilities, nursing facilities and 24-hour residential homes serving people with developmental disabilities.

Services for Seniors and People with Physical Disabilities settings that are licensed by type include:

- 1,720 commercial adult foster homes consisting of 7,263 beds, of which approximately 37 percent were occupied by Medicaid residents.
- 209 assisted living facilities consisting of 14,021 beds, of which approximately 29 percent were occupied by Medicaid residents.
- 236 residential care facilities consisting of 8,949 beds, of which approximately 26 percent were occupied by Medicaid residents.
- 140 nursing facilities consisting of 12,319 beds, of which approximately 38 percent were occupied by Medicaid residents.
- 1,815 relative foster homes, currently serving 1,569 Medicaid residents.

Community-based settings

Comprehensive services for people with developmental disabilities provide services for adults and children who are either living at home but receiving 24-hour supports, or who are in an out-of-home settings, such as a community group homes or foster home.

The following service types are included as part of the comprehensive services waiver:

- **Adult residential programs** — These provide 24-hour group home services for individuals ages 18 and older. In most cases people live in homes designed for five or fewer people, with staff who come into the home and work on a shift schedule.
- **Children’s residential care** — SPD provides residential services for children with developmental disabilities through proctor care and community residential group homes. Supervised care, training and support services are delivered in 24-hour neighborhood group home settings for children 18 and younger. Homes are designed for three to five children, with staff who come into the homes and work on a shift schedules.
- **Supported living services** — These services are similar to residential group homes in that each individual requires a plan for 24-hour supports and services and there is a provider organization under contract to provide those services. Supported living is generally provided in apartment or small home settings that are rented or leased by the individuals being served.
- **Non-relative developmental disability foster care** — Developmental disability foster homes provide residential care and services to children and adults with developmental disabilities. Services include 24-hour supervision, room and board, assistance with the activities of everyday living, and access to services that help individuals develop appropriate skills to increase or maintain their level of functioning.
- **State-operated community programs** — These programs provide 24-hour community residential care for 138 people who have a developmental disabilities and intensive support needs due either to a medical or behavioral condition. There are 29 homes, serving five or fewer people, located in seven counties.

Community-based settings

Community-based facilities include a variety of 24-hour care settings and services for seniors and people with physical disabilities that provide an alternative to nursing facilities. Services include assistance with activities of daily living, medication oversight and social activities. Services can include nursing and behavioral supports to meet complex needs.

Service settings include:

- **Adult foster homes** — These services are provided in home-like settings. Each is licensed for five or fewer individuals who are not related to the foster home provider. Homes may specialize in certain services such as serving ventilator-dependent residents.
- **Residential care facilities** — These facilities are licensed 24-hour service settings serving six or more residents. Facilities range in size from six beds to more than 100. Different types of residential care include 24-hour residential care for adults and specialty Alzheimer’s facilities. Registered nurse consultation services are required by regulation.
- **Assisted living facilities** — These facilities are licensed 24-hour settings for six or more residents that include private apartments. Services are comparable to residential care facilities. Regulation requires registered nurse consultation services.

Nursing facilities

Institutional services for seniors and people with physical disabilities are provided in nursing facilities licensed and regulated by DHS. Nursing facilities provide individuals with skilled nursing services, housing, related services and ongoing assistance with activities of daily living.

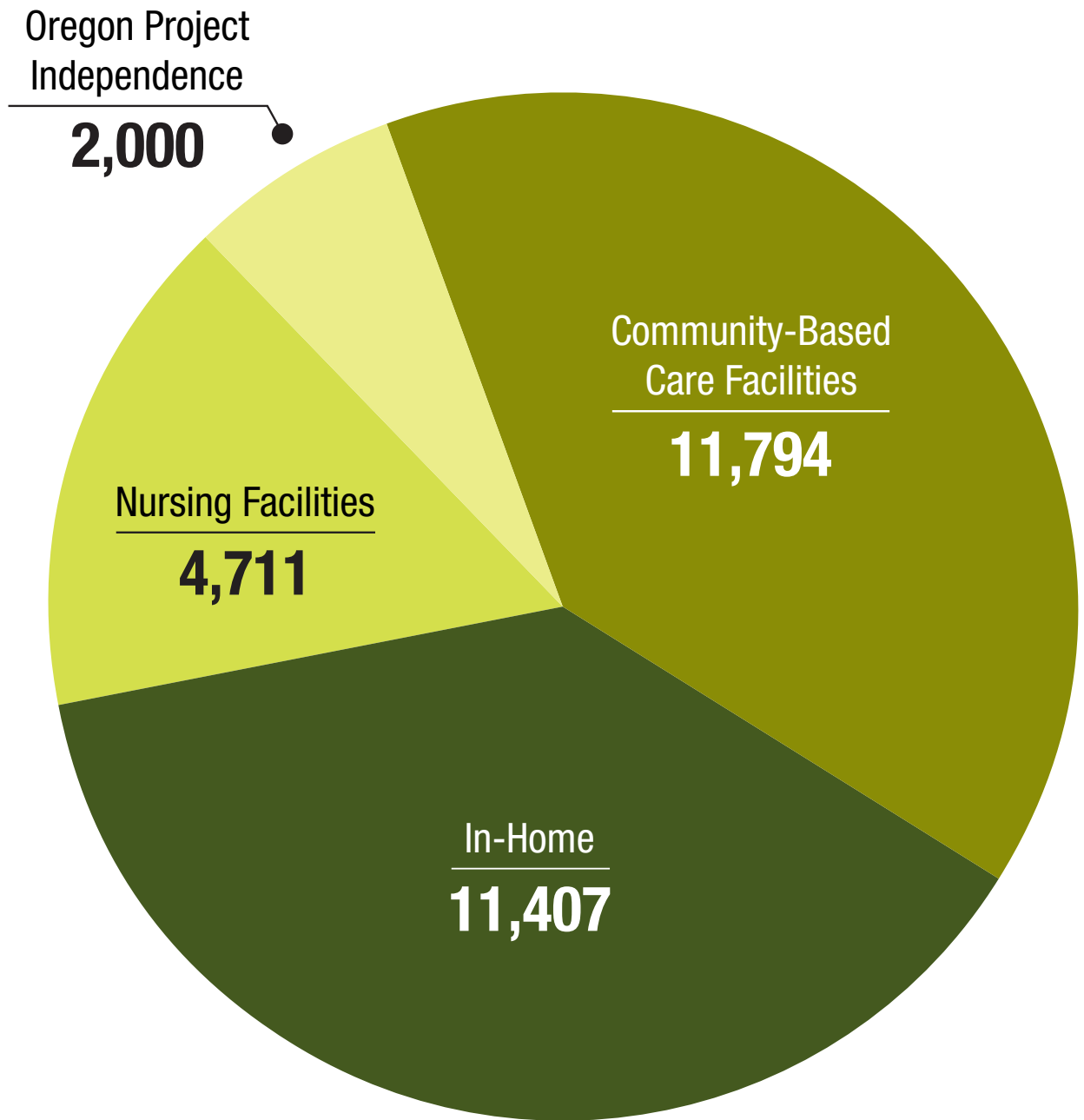
Challenge:

- The rapid growth of the over-65 population will place unprecedented demand on Oregon's long-term care system.
- Occupancy rates for long-term care facilities are very strong, creating concerns about the system's ability to handle future growth.
- The Medicaid long-term care system will continue to compete with private pay individuals who are able to pay higher rates for access.
- The need for a realignment of Medicaid to allow more individuals with significant needs to remain in the community rather than enter institutions.
- The recruitment and retention of a long-term care work force.

Budget reductions

- Nearly all strategic reduction options require collective bargaining, approval of changes by the Medicaid Long Term Care Quality and Reimbursement Advisory Council or passage of enabling legislation. SPD's managerial authority is essentially limited to:
 - ◆ Reducing benefits for in-home clients, provided that Centers for Medicare & Medicaid Services (CMS) approves the change.
 - ◆ Eliminating optional benefits.
 - ◆ Reducing provider rates.

*Seniors and People with Disabilities and physically disabled program;
clients by service setting as of June 2010*



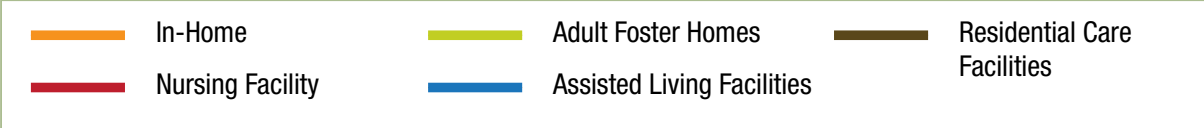
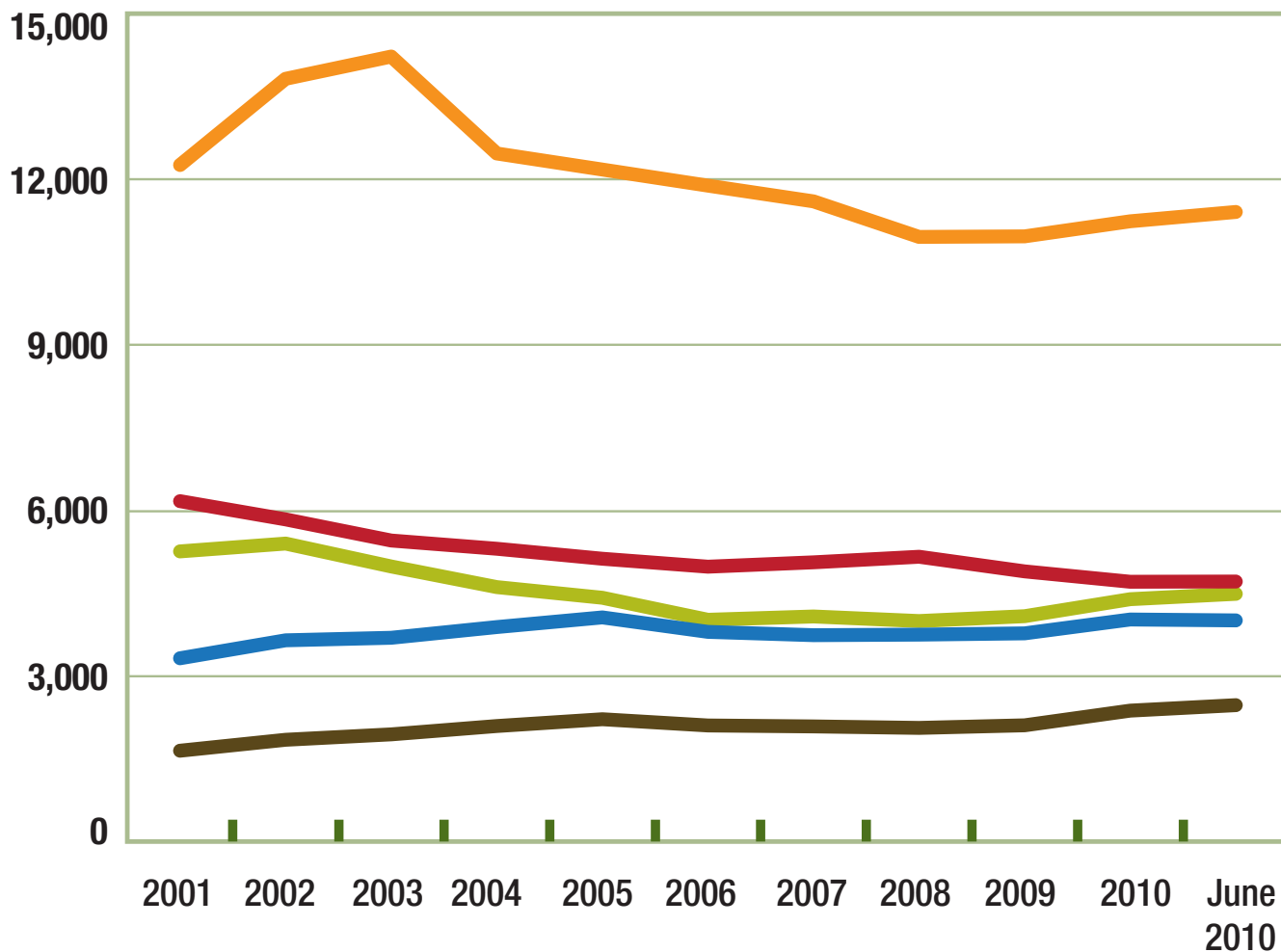
Statewide Seniors and People with Physical Disabilities as of June 2010

SPL	Non Relative Foster Home Care	Relative Foster Home Care	Assisted Living	Nursing Facilities	In-Home Hourly	In-Home Live-In	Residential Care	Contract Residential Care	Specialized Living	Spousal Pay	PACE	Independent Choices	Total
1	328	138	19	895	182	65	50	160	0	15	100	8	1,940
2	8	12	5	7	17	4	1		0	4	0	1	60
3	1,779	683	1,501	3,083	2,296	635	563	1,217	85	71	442	112	12,467
4	139	65	145	154	316	43	44	23	3	0	32	8	972
5	46	69	135	44	472	68	20	7	3	0	11	25	900
6	9	16	35	3	93	5	4	1	1	0	5	3	175
7	342	379	1,193	392	3,443	230	170	52	19	0	141	88	6,449
8	4	8	12	4	23	0	1	2	0	0	0	1	55
9	11	2	10	3	16	0	3	1	0	0	1	0	47
10	117	123	620	70	1,493	17	65	11	35	0	58	7	2,616
11	61	50	185	34	339	0	23	12	5	0	19	0	728
12	3	2	12	1	19	0	1	0	0	0	0	0	38
13	72	22	135	21	1,153	1	29	10	3	0	19	0	1,465
Total	2,919	1,569	4,007	4,711	9,842	1,068	974	1,497	154	90	828	253	27,912

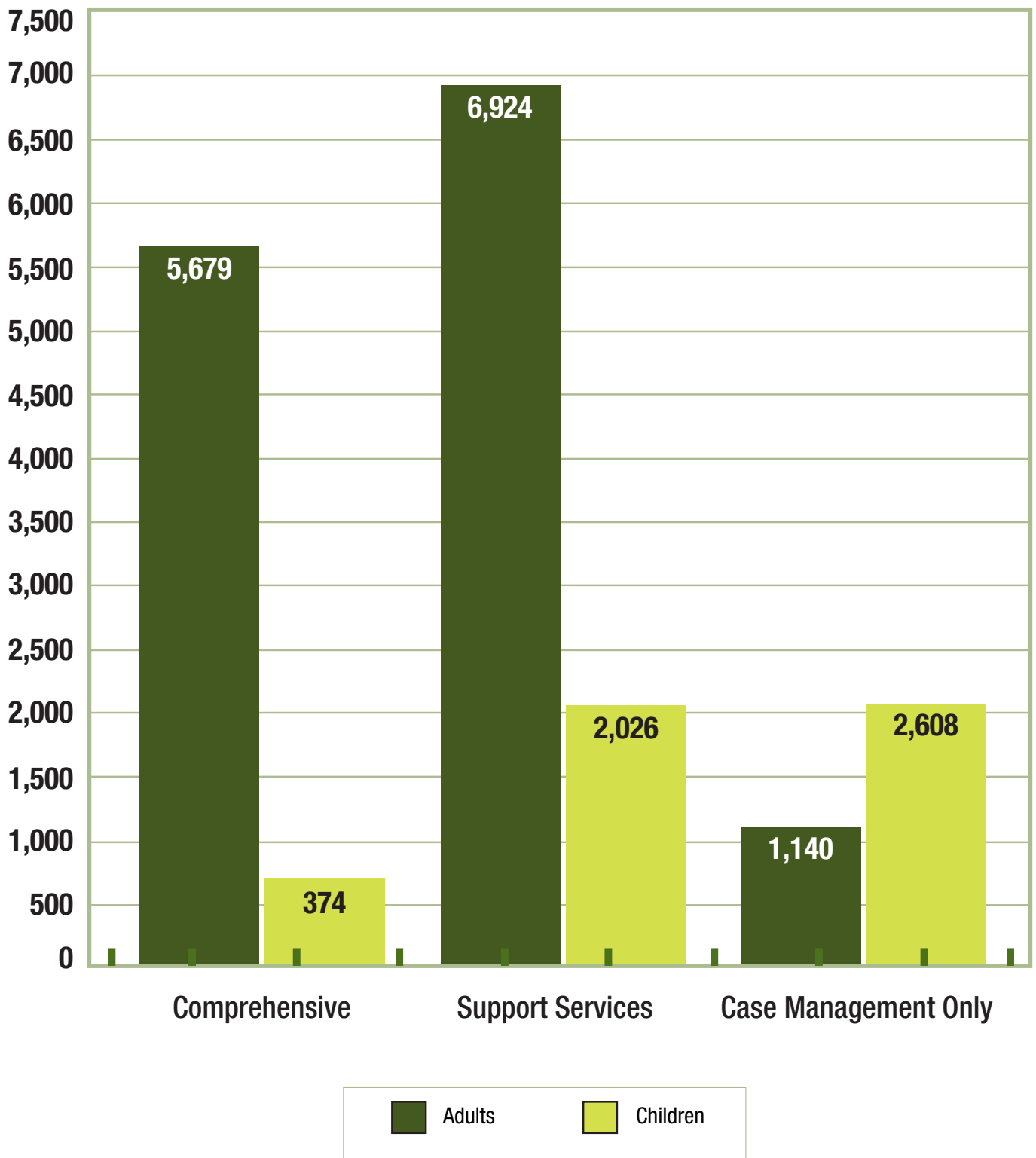
Age by county: Seniors and People with Disabilities in-home, adult foster home, residential care, assisted living, nursing facility and personal care clients as of June 2010

County	Age group		Total
	Under 65	Over 65	
Baker	39	108	147
Benton	89	159	248
Clackamas	658	1,564	2,222
Clatsop	75	194	269
Columbia	77	188	265
Coos	417	592	1,009
Crook	40	24	164
Curry	67	145	212
Deschutes	243	501	744
Douglas	392	715	1,107
Gilliam	3	11	14
Grant	16	58	74
Harney	20	43	63
Hood	28	87	115
Jackson	524	962	1,486
Jefferson	48	78	126
Josephine	317	611	928
Klamath	717	261	432
Lake	10	32	42
Lane	840	1,601	2,441
Lincoln	171	341	512
Linn	381	743	1,124
Malheur	73	236	309
Marion	660	1,497	2,157
Morrow	27	40	67
Multnomah	2,209	4,446	6,655
Polk	198	390	588
Sherman	5	7	12
Tillamook	40	100	140
Umatilla	202	453	655
Union	62	180	242
Wallowa	19	48	67
Wasco	74	206	280
Washington	603	1,618	2,221
Wheeler	3	11	14
Yamhill	181	580	761
Totals	8,982	18,930	27,912

Statewide Seniors and People with Physical Disabilities long-term clients as of June 2010



Developmentally disabled caseloads in Oregon as of June 2010



SPD contracts with 32 counties for services statewide as of June 2010

County	Individuals enrolled in case management
Baker	109
Benton	453
Clackamas	1,554
Clatsop	191
Columbia	291
Coos	317
Crook	72
Curry	129
Deschutes	512
Douglas	526
Grant	35
Harney	25
Jackson	882
Jefferson	88
Josephine	457
Klamath	464
Lake	37
Lane	1,805
Lincoln	284
Linn	678
Malheur	170
Marion	1,904
Mid-Columbia	269
Morrow	27
Multnomah	4,108
Polk	486
Tillamook	178
Umatilla	346
Union	162
Wallowa	32
Washington	1,807
Wheeler	4
Yamhill	606
Totals	19,008

People with developmental disabilities by care setting as of June 2010

