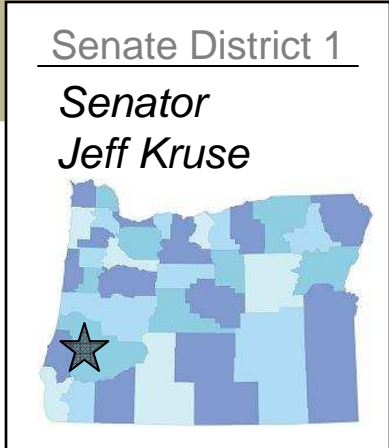
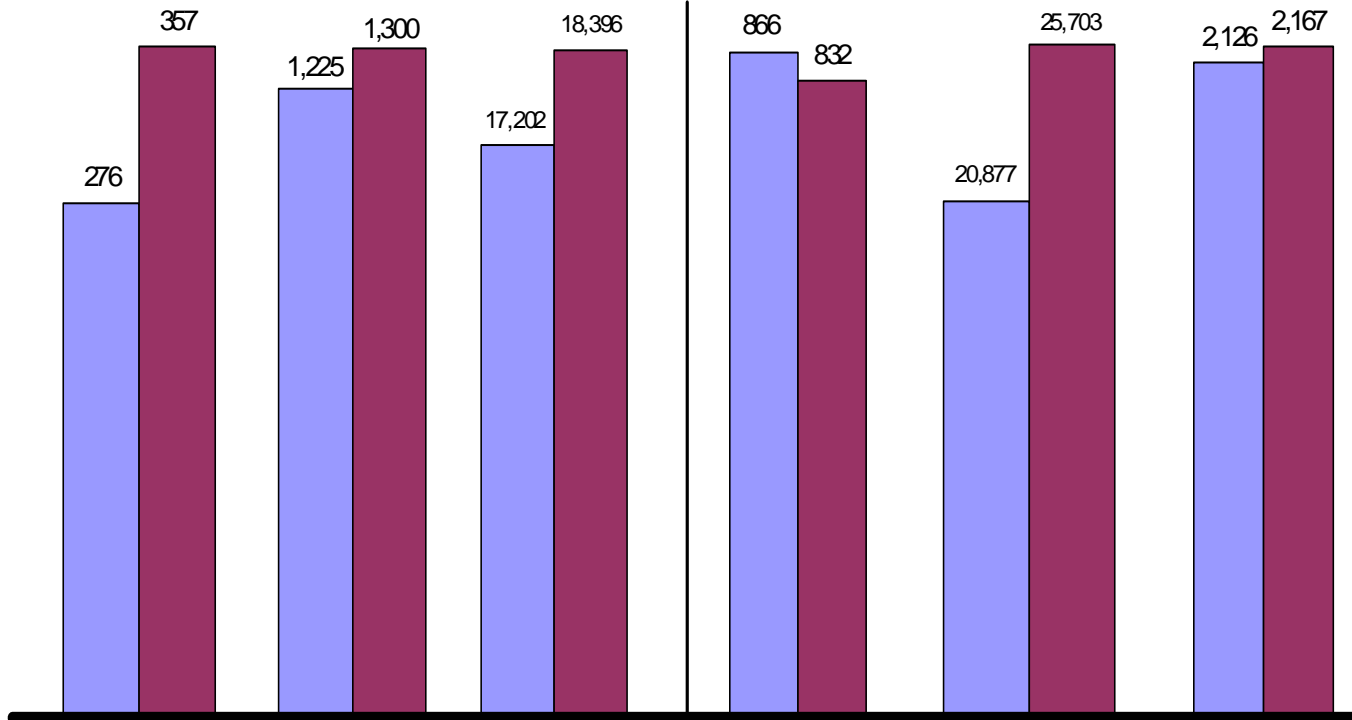


DHS Caseloads

Aug-08 Aug-09



	Foster Care	Long Term Care*	Oregon Health Plan	Employment Related Daycare	SNAP (Food Stamps)	Temporary Assistance for Needy Families
*Long Term Care data from July 2008, July 2009						
% Change SD 1	29.3%	6.1%	6.9%	-3.9%	23.1%	1.9%
% Change Statewide	-0.02%	0.6%	9.6%	0.1%	30.4%	19.7%

District Demographic Information (from 2000 U.S. Census)										
	AGE				RACE*					
	Total Population	Residents Under 18	Residents Under 5	Residents 65 and Over	White	African American	American Indian	Asian	Other	Hispanic (of any race)
Number	113,711	25,983	5,971	22,296	109,344	441	4,247	1,167	1,855	2,656
Percent	100.0%	22.9%	5.3%	19.6%	96.2%	0.4%	3.7%	1.0%	1.6%	2.3%
Statewide Percent		24.7%	6.5%	12.9%	89.2%	2.2%	2.6%	3.6%	5.7%	8.2%

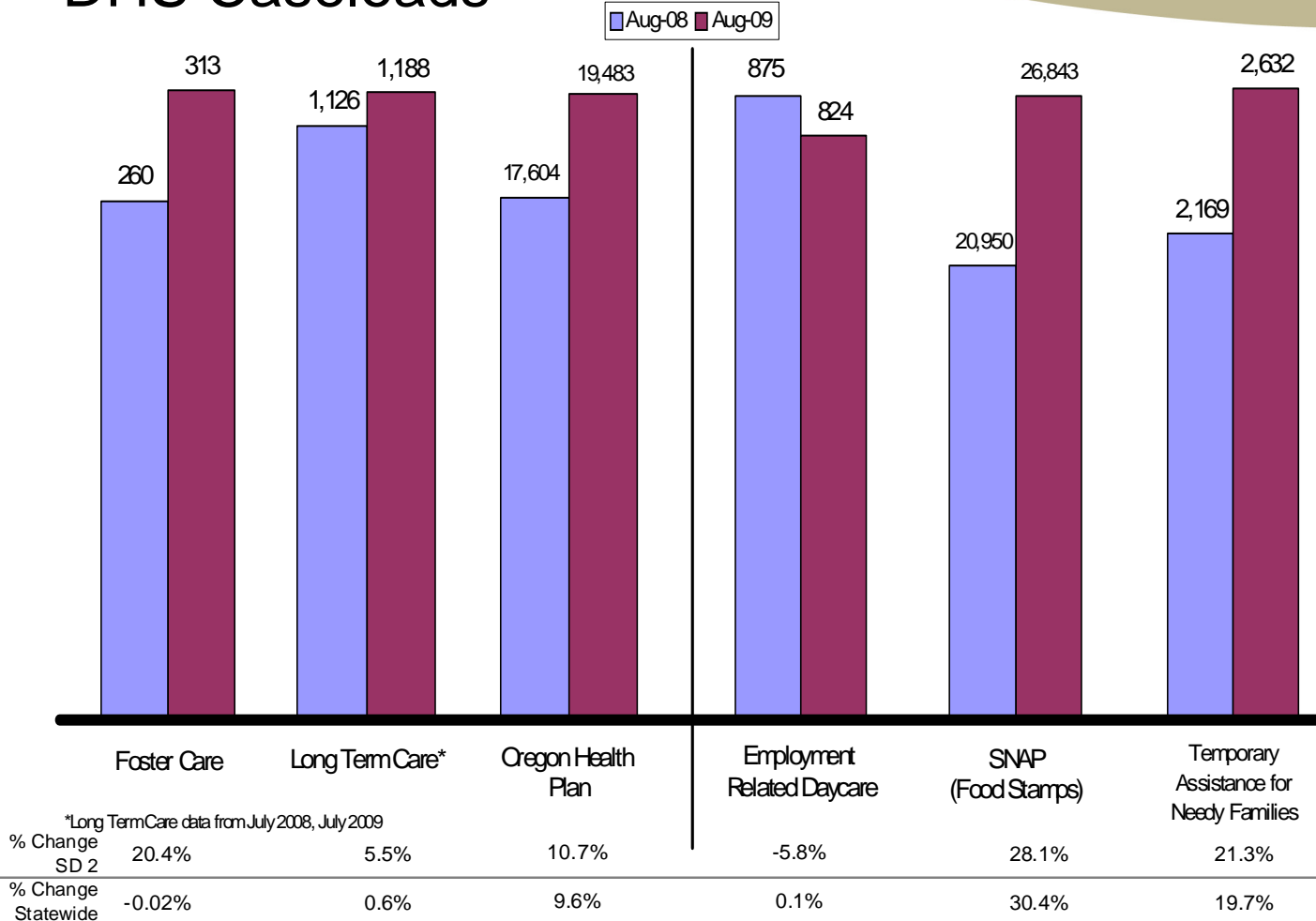
*Total for race may exceed 100% - Includes double-counts for those who indicated more than one race

Source: U.S. Census Bureau, State Legislative District Summary File

States provided updated boundaries in 2005/2006 as part of Phase 1 of the 2010 Census Redistricting Data Program.

DHS Caseloads

Senate District 2
 Senator
 Jason Atkinson



District Demographic Information (from 2000 U.S. Census)										
	AGE				RACE*					
	Total Population	Residents Under 18	Residents Under 5	Residents 65 and Over	White	African American	American Indian	Asian	Other	Hispanic (of any race)
Number	114,438	27,185	6,353	21,355	110,306	493	3,073	1,146	2,590	3,649
Percent	100.0%	23.8%	5.6%	18.7%	96.4%	0.4%	2.7%	1.0%	2.3%	3.2%
Statewide Percent		24.7%	6.5%	12.9%	89.2%	2.2%	2.6%	3.6%	5.7%	8.2%

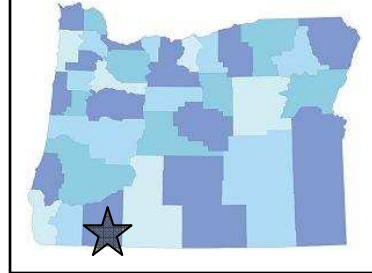
*Total for race may exceed 100% - Includes double-counts for those who indicated more than one race
 Source: U.S. Census Bureau, State Legislative District Summary File
 States provided updated boundaries in 2005/2006 as part of Phase 1 of the 2010 Census Redistricting Data Program.



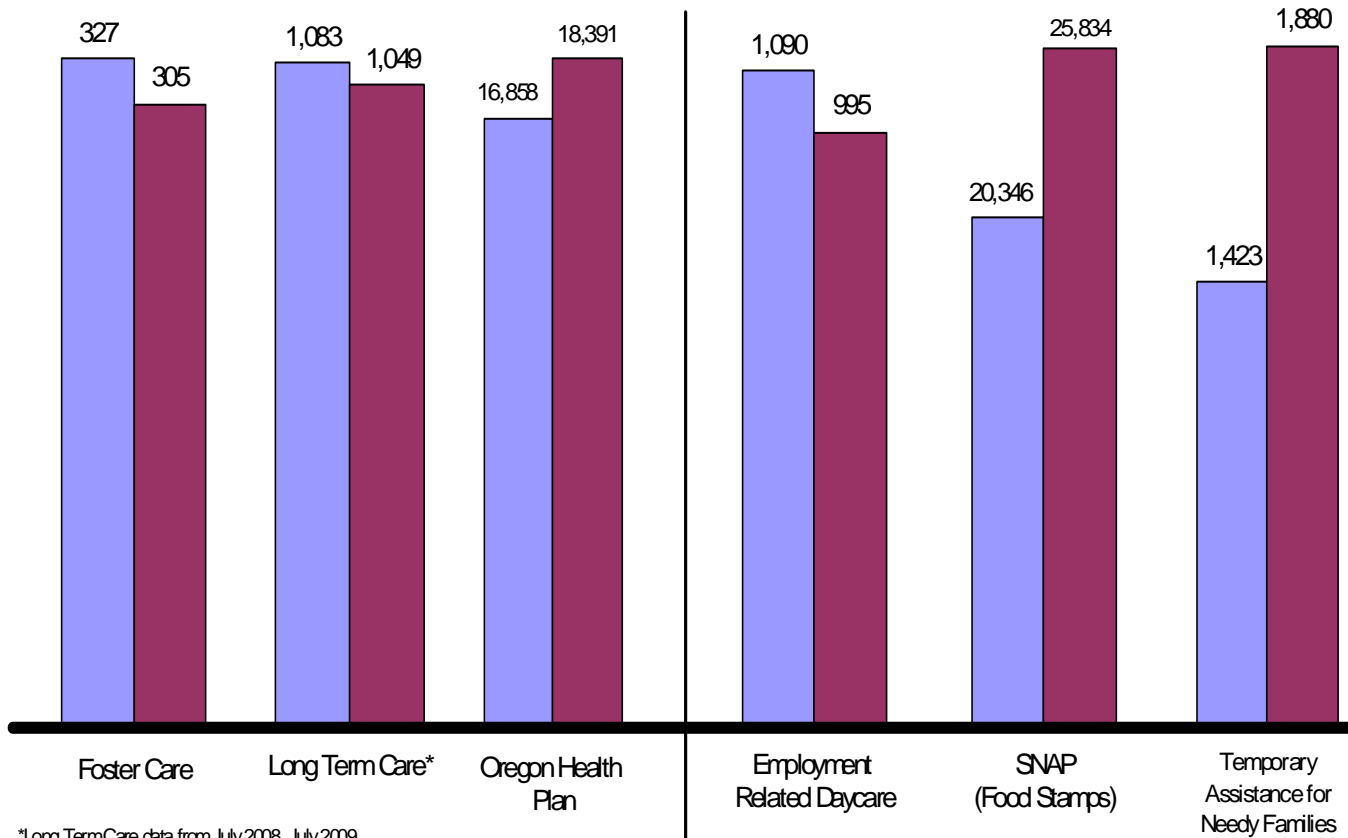
DHS Caseloads

Senate District 3

Senator
Alan Bates



Aug-08 Aug-09



*Long Term Care data from July 2008, July 2009

	Foster Care	Long Term Care*	Oregon Health Plan	Employment Related Daycare	SNAP (Food Stamps)	Temporary Assistance for Needy Families
% Change SD 3	-6.7%	-3.1%	9.1%	-8.7%	27.0%	32.1%
% Change Statewide	-0.02%	0.6%	9.6%	0.1%	30.4%	19.7%

District Demographic Information (from 2000 U.S. Census)										
	AGE				RACE*					
	Total Population	Residents Under 18	Residents Under 5	Residents 65 and Over	White	African American	American Indian	Asian	Other	Hispanic (of any race)
Number	114,864	27,133	6,843	19,269	107,630	947	2,561	1,979	5,492	6,796
Percent	100.0%	23.6%	6.0%	16.8%	93.7%	0.8%	2.2%	1.7%	4.8%	5.9%
Statewide Percent		24.7%	6.5%	12.9%	89.2%	2.2%	2.6%	3.6%	5.7%	8.2%

*Total for race may exceed 100% - Includes double-counts for those who indicated more than one race

Source: U.S. Census Bureau, State Legislative District Summary File

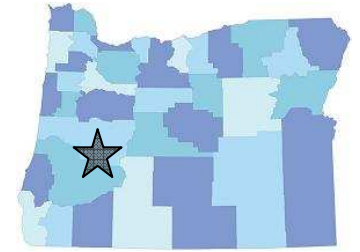
States provided updated boundaries in 2005/2006 as part of Phase 1 of the 2010 Census Redistricting Data Program.



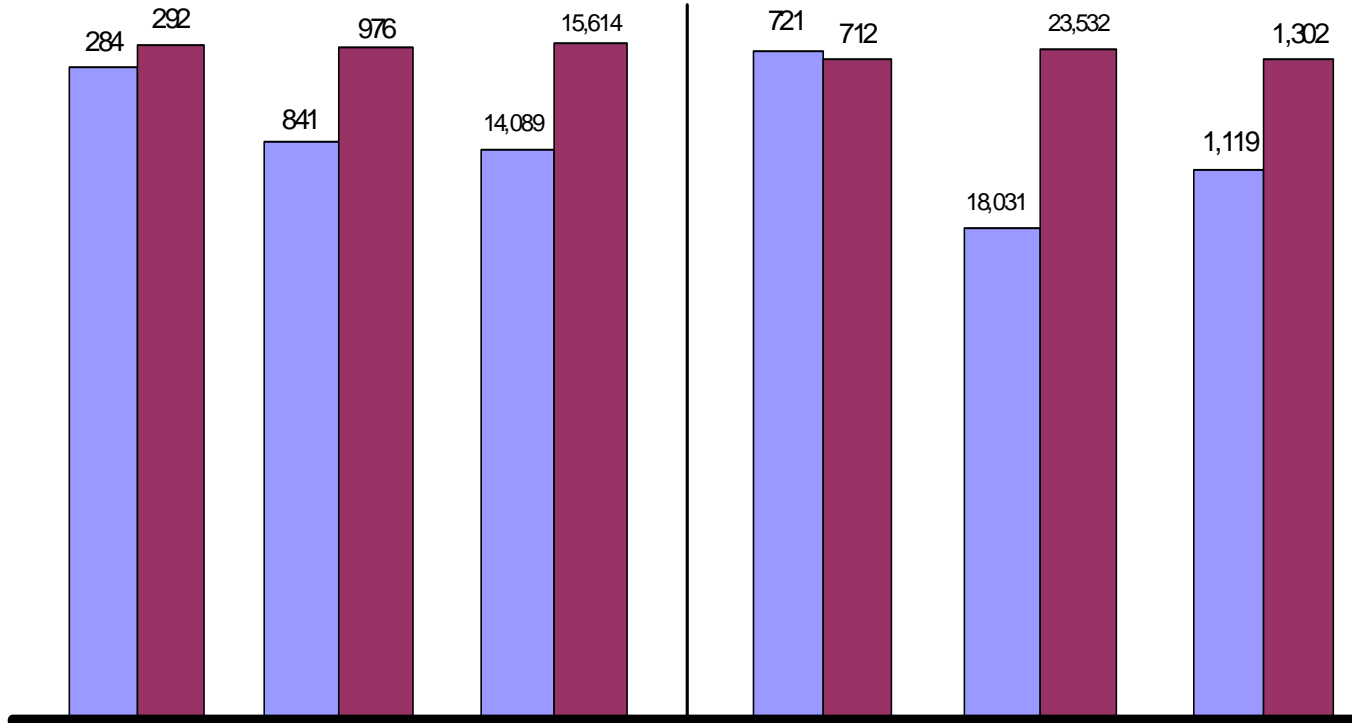
DHS Caseloads

Senate District 4

Senator
Floyd Prozanski



Aug-08 Aug-09



*Long Term Care data from July 2008, July 2009

	Foster Care	Long Term Care*	Oregon Health Plan	Employment Related Daycare	SNAP (Food Stamps)	Temporary Assistance for Needy Families
% Change SD 4	2.8%	16.1%	10.8%	-1.2%	30.5%	16.4%
% Change Statewide	-0.02%	0.6%	9.6%	0.1%	30.4%	19.7%

District Demographic Information (from 2000 U.S. Census)										
AGE				RACE*						
	Total Population	Residents Under 18	Residents Under 5	Residents 65 and Over	White	African American	American Indian	Asian	Other	Hispanic (of any race)
Number	114,864	27,133	6,843	19,269	107,630	947	2,561	1,979	5,492	6,796
Percent	100.0%	23.6%	6.0%	16.8%	93.7%	0.8%	2.2%	1.7%	4.8%	5.9%
Statewide Percent		24.7%	6.5%	12.9%	89.2%	2.2%	2.6%	3.6%	5.7%	8.2%

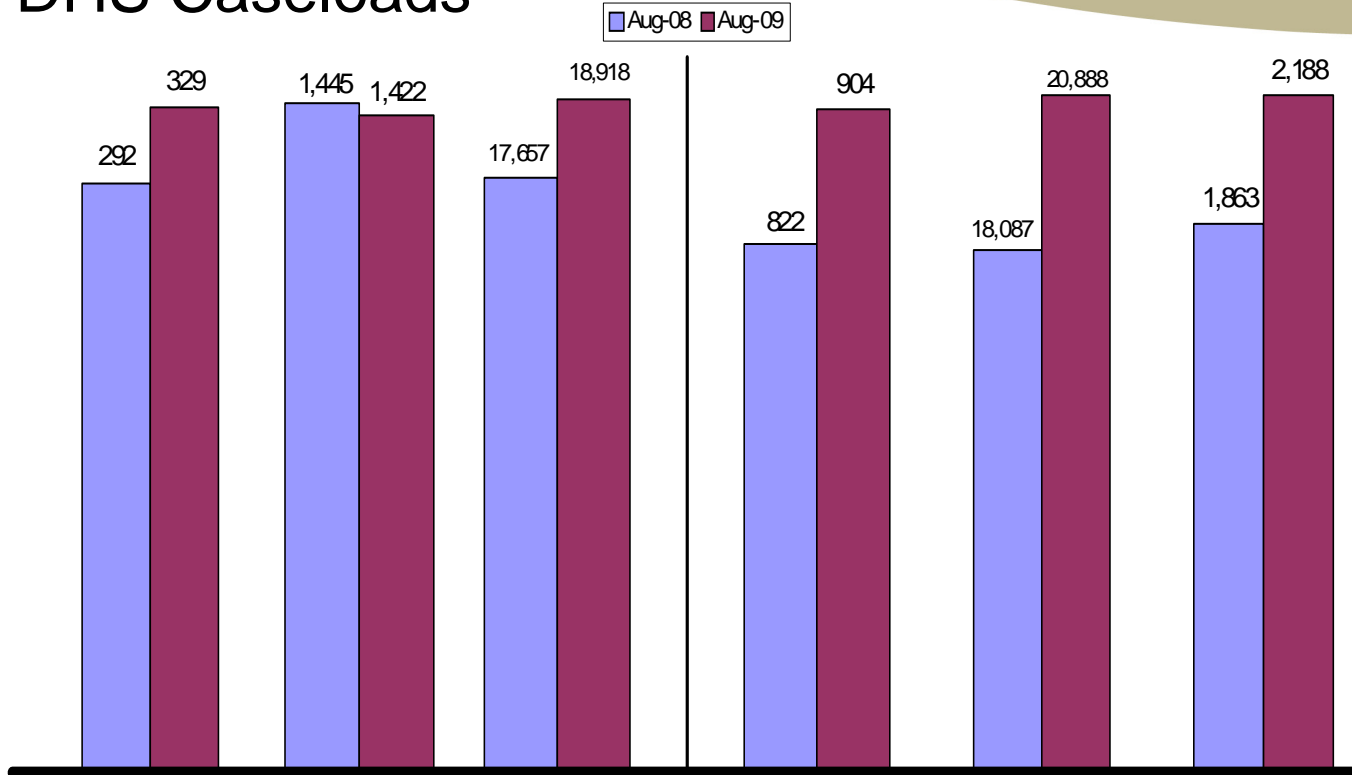
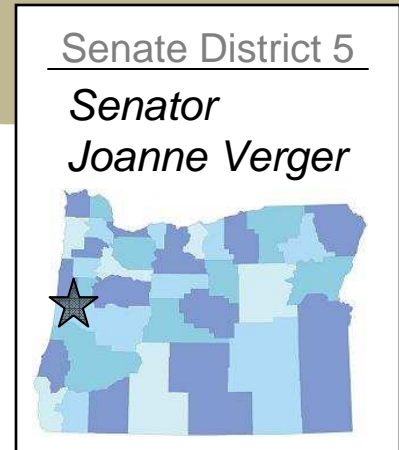
*Total for race may exceed 100% - Includes double-counts for those who indicated more than one race

Source: U.S. Census Bureau, State Legislative District Summary File

States provided updated boundaries in 2005/2006 as part of Phase 1 of the 2010 Census Redistricting Data Program.



DHS Caseloads



*Long Term Care data from July 2008, July 2009

	Foster Care	Long Term Care*	Oregon Health Plan	Employment Related Daycare	SNAP (Food Stamps)	Temporary Assistance for Needy Families
% Change SD 5	12.7%	-1.6%	7.1%	10.0%	24.7%	17.4%
% Change Statewide	-0.02%	0.6%	9.6%	0.1%	30.4%	19.7%

District Demographic Information (from 2000 U.S. Census)										
AGE				RACE*						
	Total Population	Residents Under 18	Residents Under 5	Residents 65 and Over	White	African American	American Indian	Asian	Other	Hispanic (of any race)
Number	114,139	24,308	5,480	23,391	107,814	621	5,515	1,523	2,400	3,272
Percent	100.0%	21.3%	4.8%	20.5%	94.5%	0.5%	4.8%	1.3%	2.1%	2.9%
Statewide Percent		24.7%	6.5%	12.9%	89.2%	2.2%	2.6%	3.6%	5.7%	8.2%

*Total for race may exceed 100% - Includes double-counts for those who indicated more than one race

Source: U.S. Census Bureau, State Legislative District Summary File

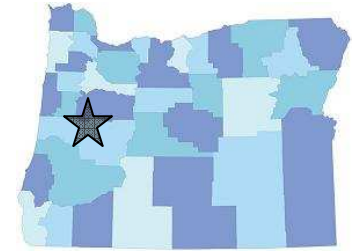
States provided updated boundaries in 2005/2006 as part of Phase 1 of the 2010 Census Redistricting Data Program.



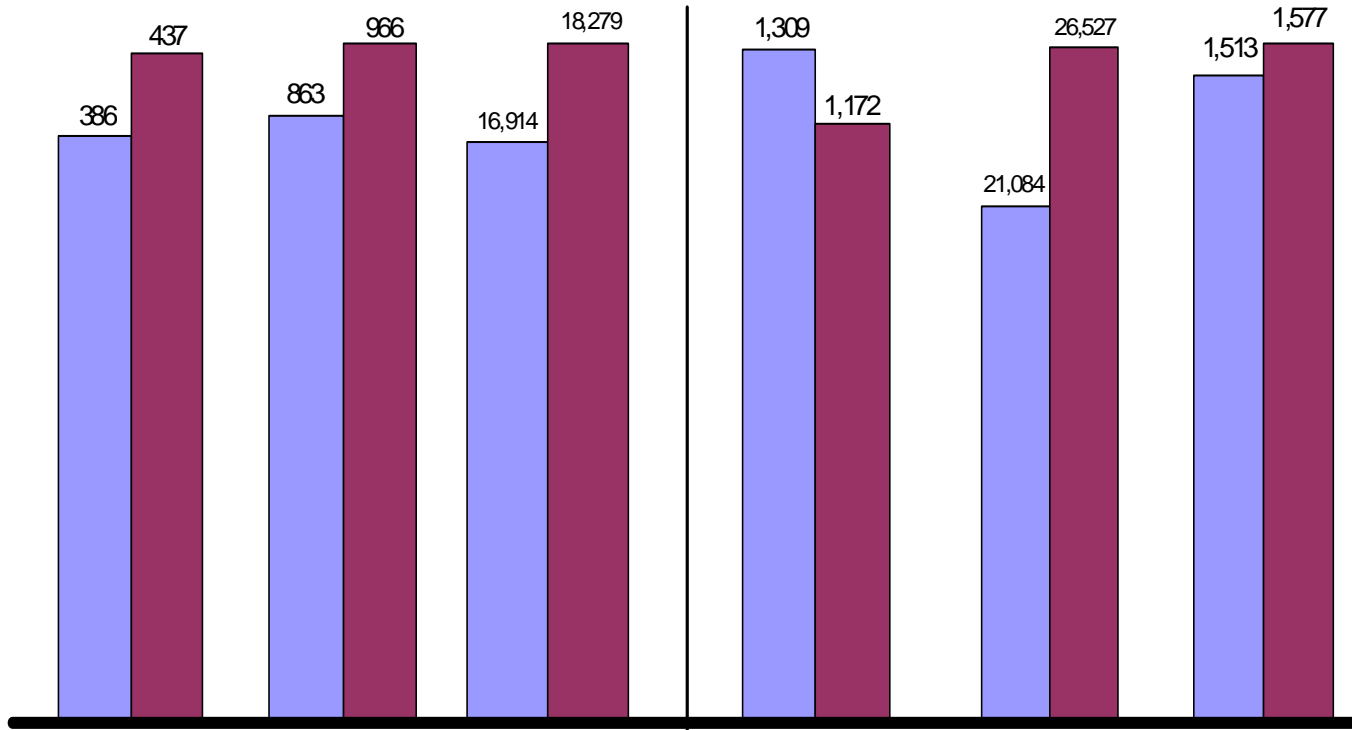
DHS Caseloads

Senate District 6

Senator
Bill Morrisette



Aug-08 Aug-09



Foster Care

Long Term Care*

Oregon Health Plan

Employment Related Daycare

SNAP (Food Stamps)

Temporary Assistance for Needy Families

*Long Term Care data from July 2008, July 2009

	SD 6	Statewide
% Change SD 6	13.2%	-0.02%
% Change Statewide	11.9%	0.6%
	8.1%	9.6%
	-10.5%	0.1%
	25.8%	30.4%
	4.2%	19.7%

District Demographic Information (from 2000 U.S. Census)

	AGE				RACE*					
	Total Population	Residents Under 18	Residents Under 5	Residents 65 and Over	White	African American	American Indian	Asian	Other	Hispanic (of any race)
Number	114,233	28,654	7,357	13,962	108,092	1,134	3,245	2,066	3,628	4,144
Percent	100.0%	25.1%	6.4%	12.2%	94.6%	1.0%	2.8%	1.8%	3.2%	3.6%
Statewide Percent		24.7%	6.5%	12.9%	89.2%	2.2%	2.6%	3.6%	5.7%	8.2%

*Total for race may exceed 100% - Includes double-counts for those who indicated more than one race

Source: U.S. Census Bureau, State Legislative District Summary File

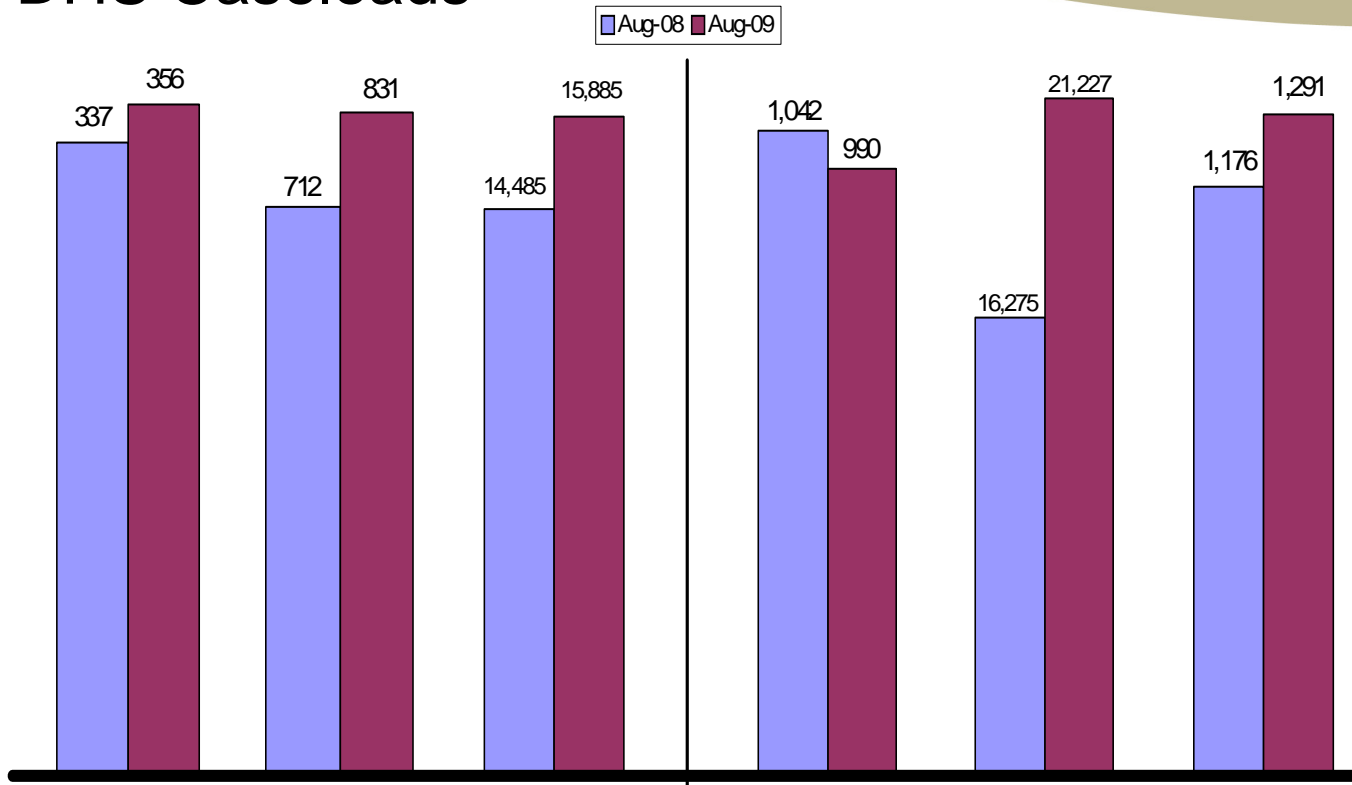
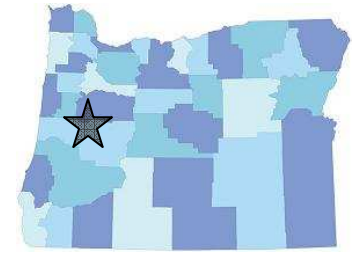
States provided updated boundaries in 2005/2006 as part of Phase 1 of the 2010 Census Redistricting Data Program.



DHS Caseloads

Senate District 7

Senator
Chris Edwards



*Long Term Care data from July 2008, July 2009

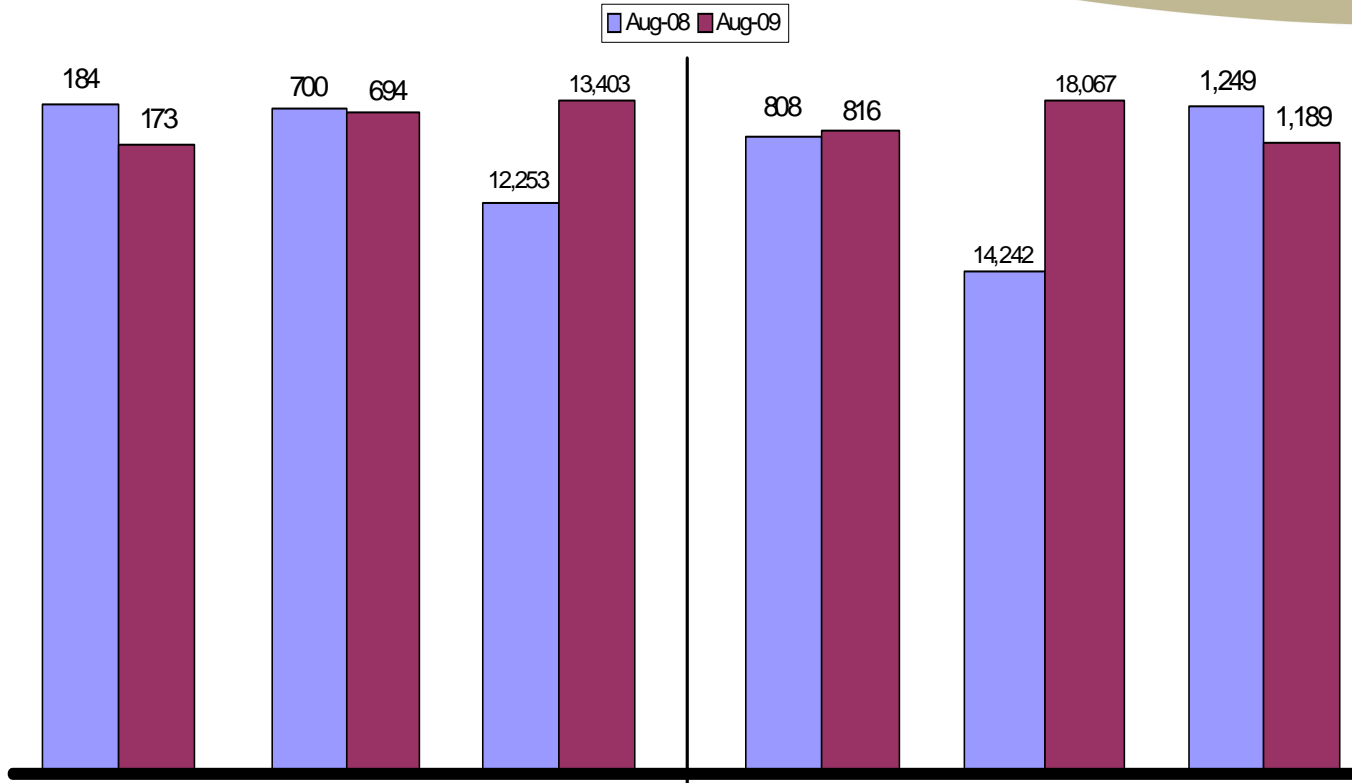
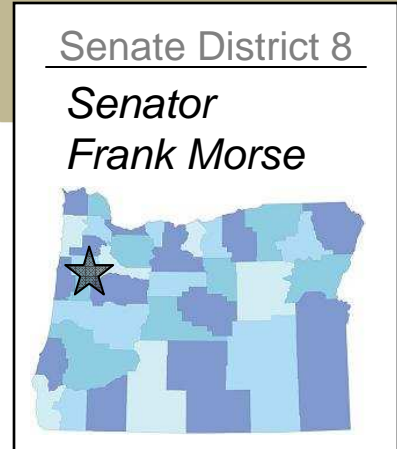
	Foster Care	Long Term Care*	Oregon Health Plan	Employment Related Daycare	SNAP (Food Stamps)	Temporary Assistance for Needy Families
% Change SD 7	5.6%	16.7%	9.7%	-5.0%	30.4%	9.8%
% Change Statewide	-0.02%	0.6%	9.6%	0.1%	30.4%	19.7%

District Demographic Information (from 2000 U.S. Census)										
AGE				RACE*						
	Total Population	Residents Under 18	Residents Under 5	Residents 65 and Over	White	African American	American Indian	Asian	Other	Hispanic (of any race)
Number	114,561	26,826	7,220	14,738	106,207	1,915	2,882	3,494	4,565	4,424
Percent	100.0%	23.4%	6.3%	12.9%	92.7%	1.7%	2.5%	3.0%	4.0%	3.9%
Statewide Percent		24.7%	6.5%	12.9%	89.2%	2.2%	2.6%	3.6%	5.7%	8.2%

*Total for race may exceed 100% - Includes double-counts for those who indicated more than one race
 Source: U.S. Census Bureau, State Legislative District Summary File
 States provided updated boundaries in 2005/2006 as part of Phase 1 of the 2010 Census Redistricting Data Program.



DHS Caseloads



*Long Term Care data from July 2008, July 2009

	Foster Care	Long Term Care*	Oregon Health Plan	Employment Related Daycare	SNAP (Food Stamps)	Temporary Assistance for Needy Families
% Change SD 8	-6.0%	-0.9%	9.4%	1.0%	26.9%	-4.8%
% Change Statewide	-0.02%	0.6%	9.6%	0.1%	30.4%	19.7%

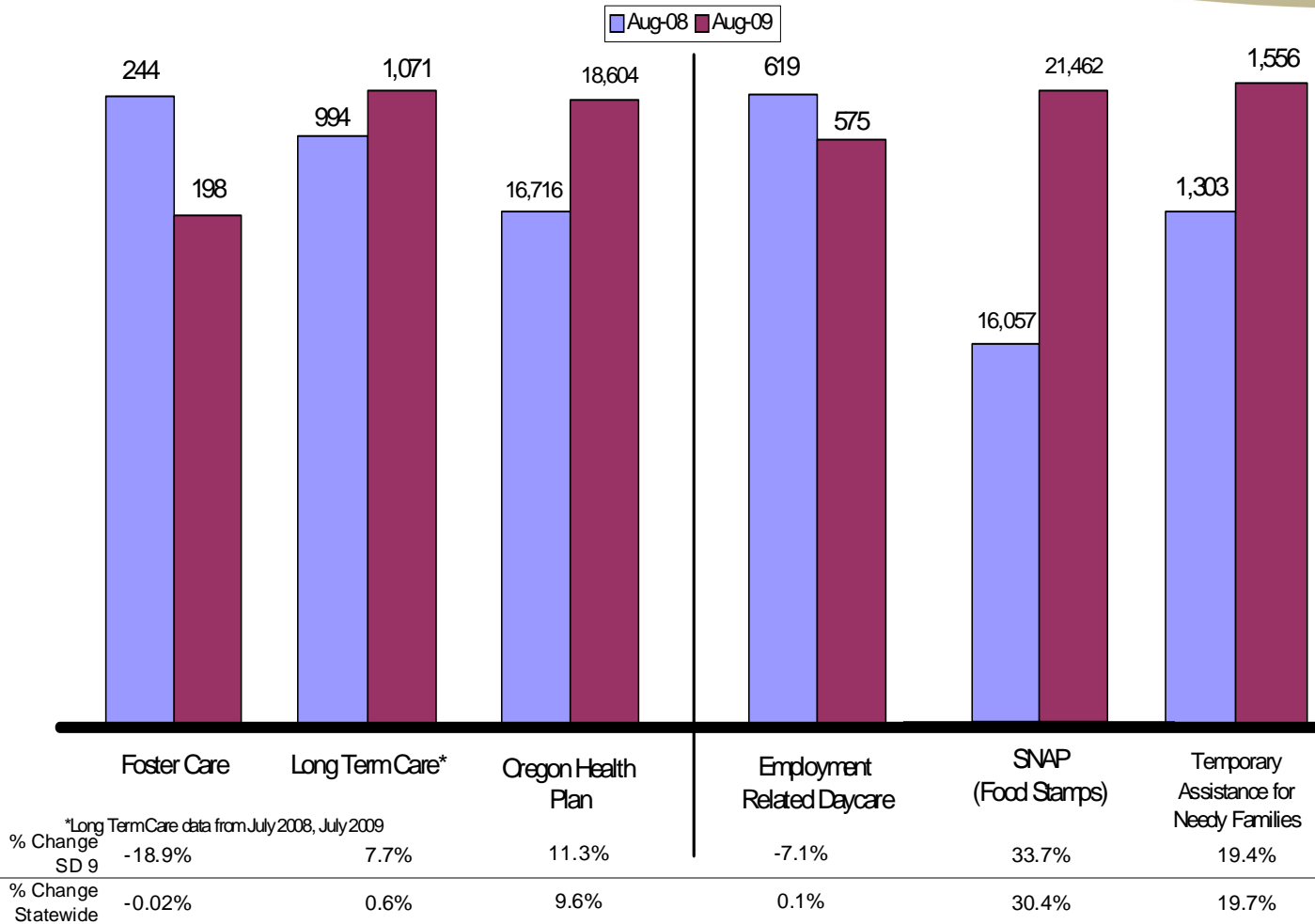
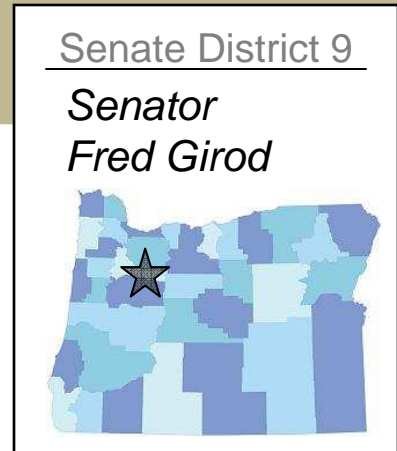
District Demographic Information (from 2000 U.S. Census)										
AGE				RACE*						
	Total Population	Residents Under 18	Residents Under 5	Residents 65 and Over	White	African American	American Indian	Asian	Other	Hispanic (of any race)
Number	114,146	25,833	6,778	13,099	105,173	1,249	2,199	4,820	3,965	4,310
Percent	100.0%	22.6%	5.9%	11.5%	92.1%	1.1%	1.9%	4.2%	3.5%	3.8%
Statewide Percent		24.7%	6.5%	12.9%	89.2%	2.2%	2.6%	3.6%	5.7%	8.2%

*Total for race may exceed 100% - Includes double-counts for those who indicated more than one race

Source: U.S. Census Bureau, State Legislative District Summary File

States provided updated boundaries in 2005/2006 as part of Phase 1 of the 2010 Census Redistricting Data Program.

DHS Caseloads



*Long Term Care data from July 2008, July 2009

District Demographic Information (from 2000 U.S. Census)										
AGE				RACE*						
	Total Population	Residents Under 18	Residents Under 5	Residents 65 and Over	White	African American	American Indian	Asian	Other	Hispanic (of any race)
Number	113,780	31,857	7,695	15,686	106,540	506	2,777	1,114	5,980	6,848
Percent	100.0%	28.0%	6.8%	13.8%	93.6%	0.4%	2.4%	1.0%	5.3%	6.0%
Statewide Percent		24.7%	6.5%	12.9%	89.2%	2.2%	2.6%	3.6%	5.7%	8.2%

*Total for race may exceed 100% - Includes double-counts for those who indicated more than one race

Source: U.S. Census Bureau, State Legislative District Summary File

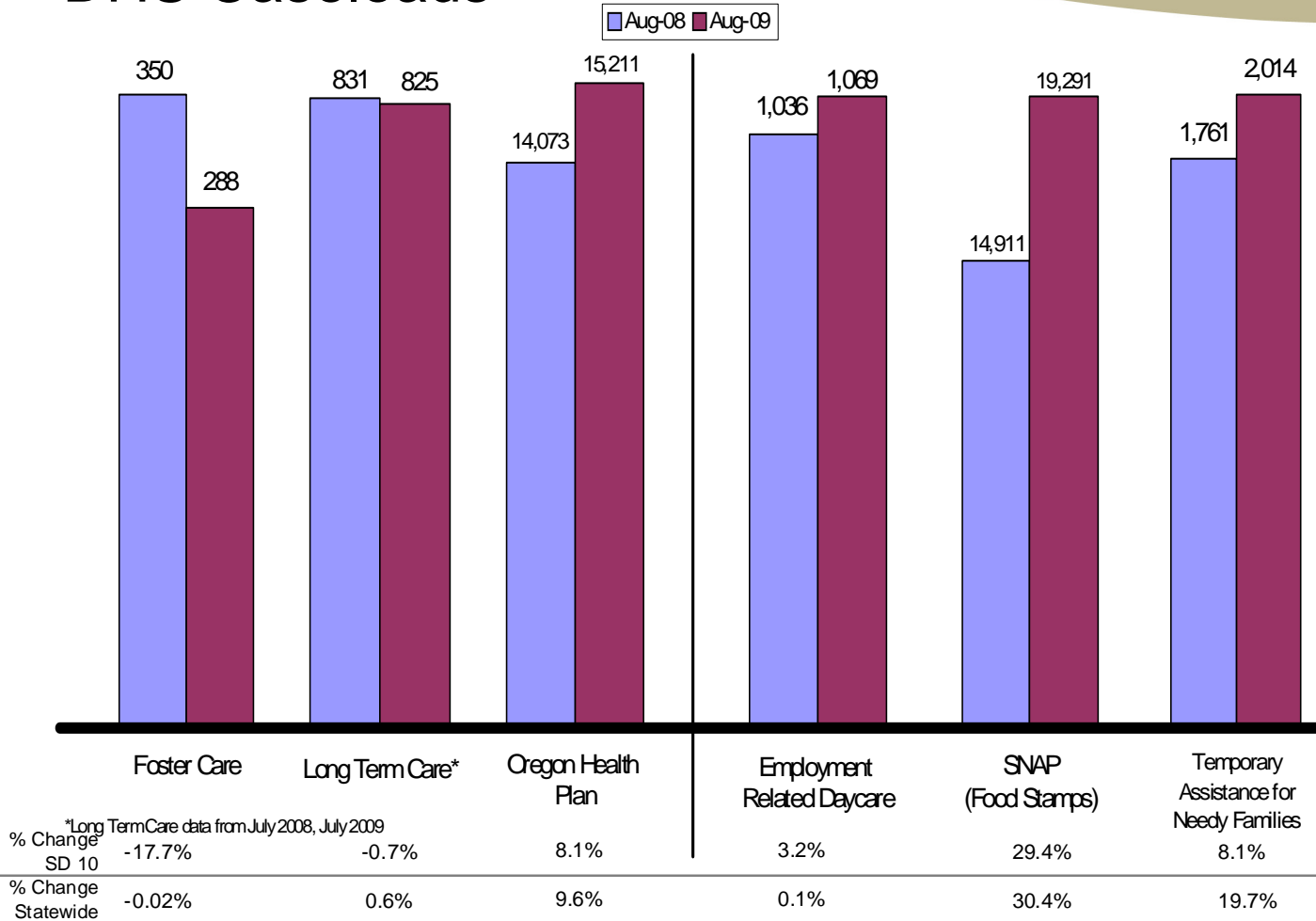
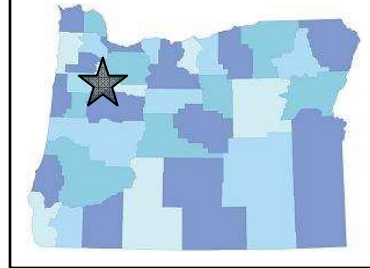
States provided updated boundaries in 2005/2006 as part of Phase 1 of the 2010 Census Redistricting Data Program.



DHS Caseloads

Senate District 10

Senator
Jackie Winters



District Demographic Information (from 2000 U.S. Census)										
AGE				RACE*						
	Total Population	Residents Under 18	Residents Under 5	Residents 65 and Over	White	African American	American Indian	Asian	Other	Hispanic (of any race)
Number	113,673	28,218	7,264	14,879	103,414	1,391	2,656	2,868	6,859	7,939
Percent	100.0%	24.8%	6.4%	13.1%	91.0%	1.2%	2.3%	2.5%	6.0%	7.0%
Statewide Percent		24.7%	6.5%	12.9%	89.2%	2.2%	2.6%	3.6%	5.7%	8.2%

*Total for race may exceed 100% - Includes double-counts for those who indicated more than one race

Source: U.S. Census Bureau, State Legislative District Summary File

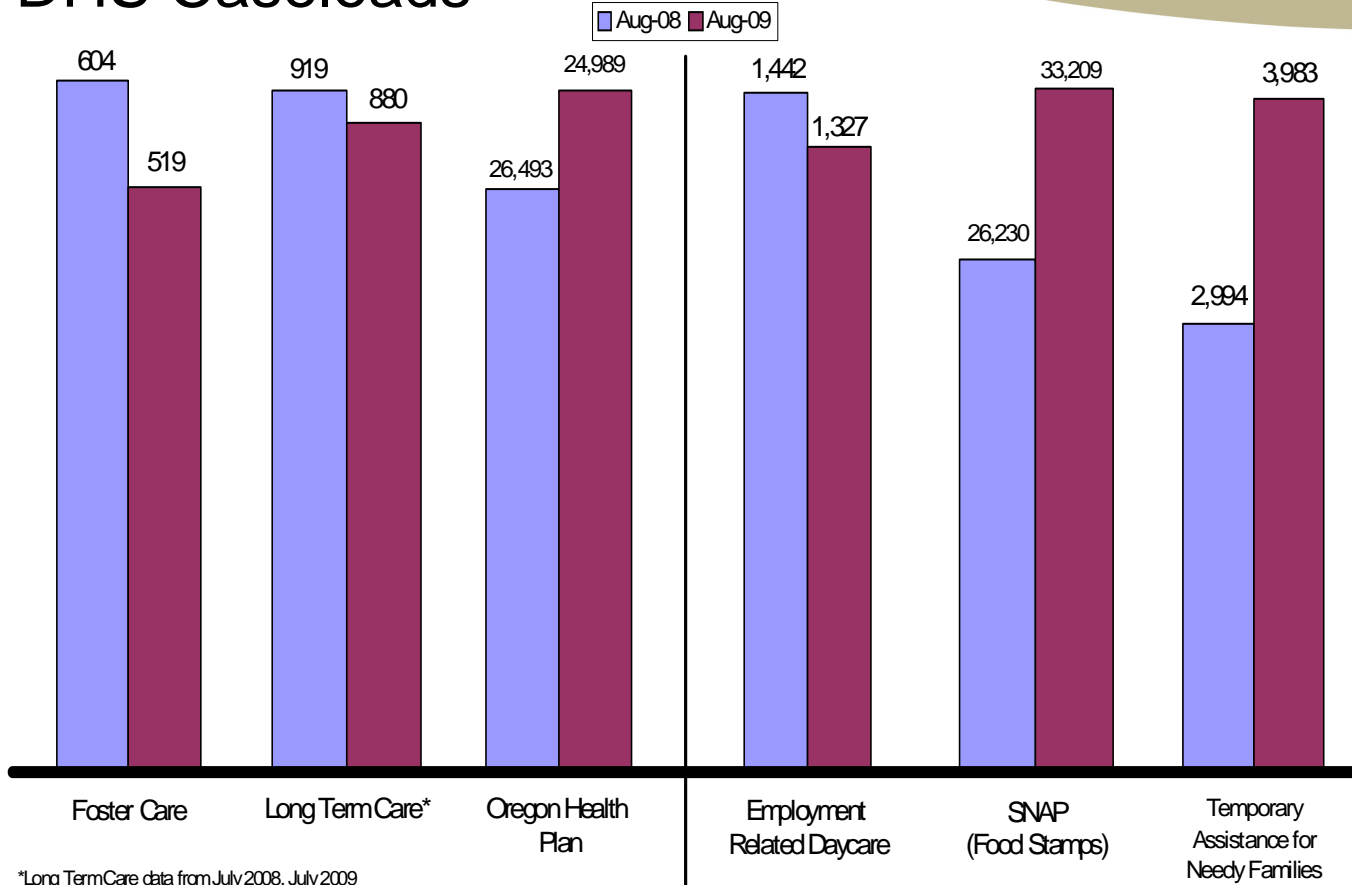
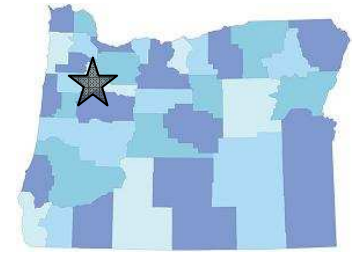
States provided updated boundaries in 2005/2006 as part of Phase 1 of the 2010 Census Redistricting Data Program.



DHS Caseloads

Senate District 11

Senator
Peter Courtney



*Long Term Care data from July 2008, July 2009

	Foster Care	Long Term Care*	Oregon Health Plan	Employment Related Daycare	SNAP (Food Stamps)	Temporary Assistance for Needy Families
% Change SD 11	-14.1%	-4.2%	10.7%	-8.0%	26.6%	33.0%
% Change Statewide	-0.02%	0.6%	9.6%	0.1%	30.4%	19.7%

District Demographic Information (from 2000 U.S. Census)										
	AGE				RACE*					
	Total Population	Residents Under 18	Residents Under 5	Residents 65 and Over	White	African American	American Indian	Asian	Other	Hispanic (of any race)
Number	113,050	31,884	10,102	13,361	85,271	2,014	3,375	3,293	23,806	27,733
Percent	100.0%	28.2%	8.9%	11.8%	75.4%	1.8%	3.0%	2.9%	21.0%	24.5%
Statewide Percent		24.7%	6.5%	12.9%	89.2%	2.2%	2.6%	3.6%	5.7%	8.2%

*Total for race may exceed 100% - Includes double-counts for those who indicated more than one race

Source: U.S. Census Bureau, State Legislative District Summary File

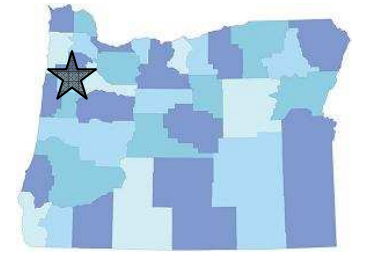
States provided updated boundaries in 2005/2006 as part of Phase 1 of the 2010 Census Redistricting Data Program.



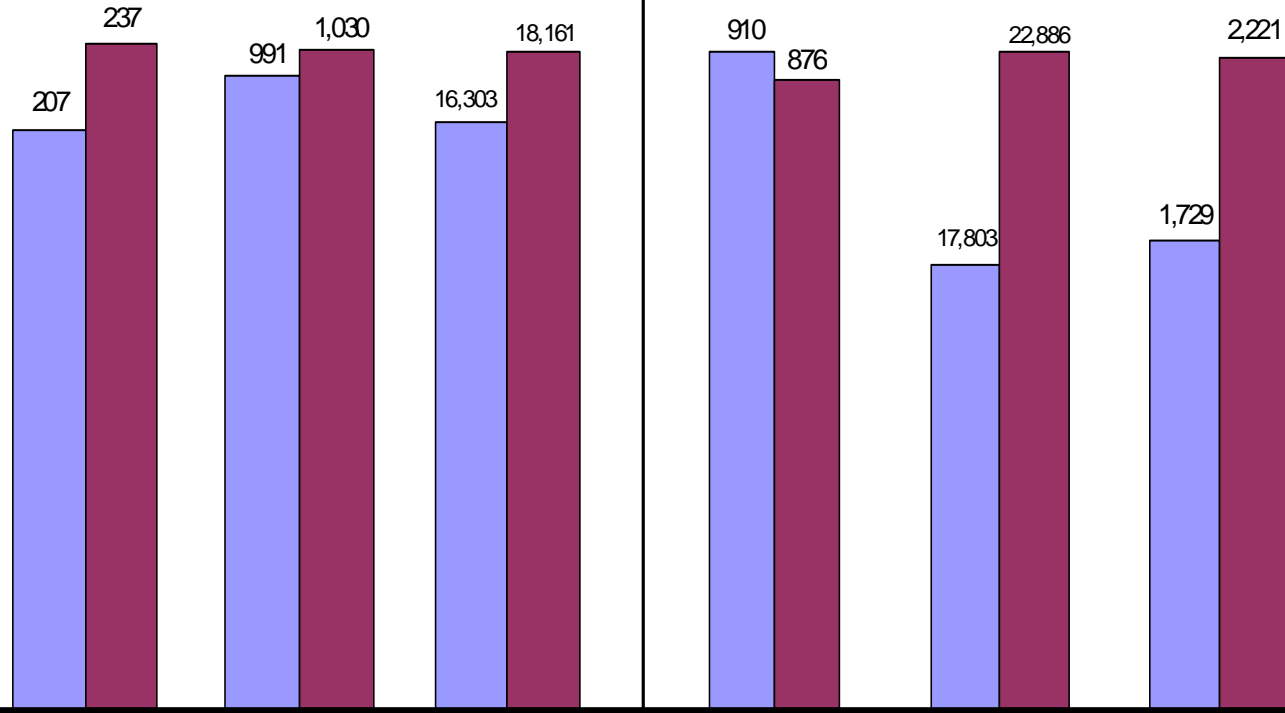
DHS Caseloads

Senate District 12

Senator
Brian Boquist



Aug-08 Aug-09



Foster Care

Long Term Care*

Oregon Health Plan

Employment Related Daycare

SNAP (Food Stamps)

Temporary Assistance for Needy Families

*Long Term Care data from July 2008, July 2009

% Change SD 12

14.5%

3.9%

11.4%

-3.7%

28.6%

28.5%

% Change Statewide

-0.02%

0.6%

9.6%

0.1%

30.4%

19.7%

District Demographic Information (from 2000 U.S. Census)

	AGE				RACE*					
	Total Population	Residents Under 18	Residents Under 5	Residents 65 and Over	White	African American	American Indian	Asian	Other	Hispanic (of any race)
Number	113,813	30,661	7,473	14,492	105,514	1,022	3,133	1,575	5,518	7,572
Percent	100.0%	26.9%	6.6%	12.7%	92.7%	0.9%	2.8%	1.4%	4.9%	6.7%
Statewide Percent		24.7%	6.5%	12.9%	89.2%	2.2%	2.6%	3.6%	5.7%	8.2%

*Total for race may exceed 100% - Includes double-counts for those who indicated more than one race

Source: U.S. Census Bureau, State Legislative District Summary File

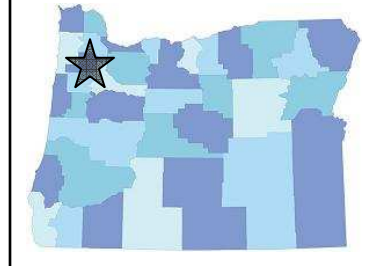
States provided updated boundaries in 2005/2006 as part of Phase 1 of the 2010 Census Redistricting Data Program.



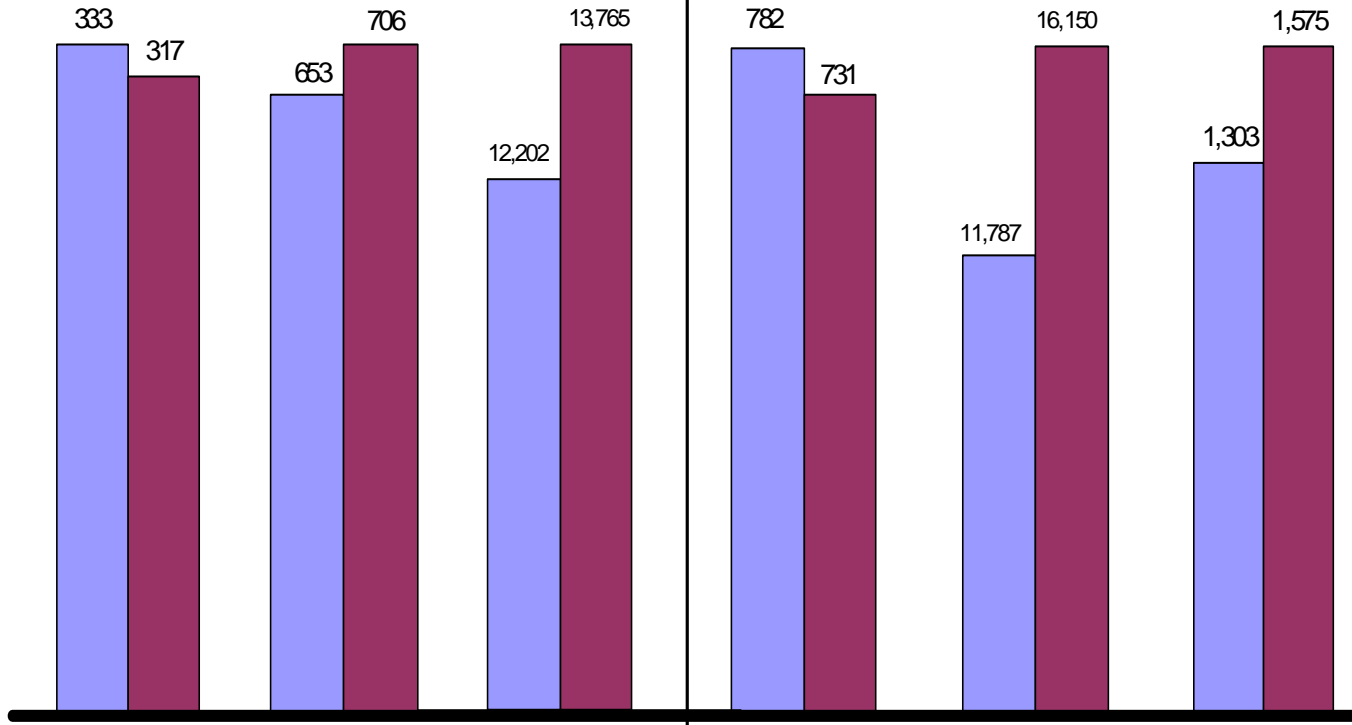
DHS Caseloads

Senate District 13

Senator
Larry George



Aug-08 Aug-09



Foster Care

Long Term Care*

Oregon Health Plan

Employment Related Daycare

SNAP (Food Stamps)

Temporary Assistance for Needy Families

*Long Term Care data from July 2008, July 2009

	Foster Care	Long Term Care*	Oregon Health Plan	Employment Related Daycare	SNAP (Food Stamps)	Temporary Assistance for Needy Families
% Change SD 13	-4.8%	8.1%	12.8%	-6.5%	37.0%	20.9%
% Change Statewide	-0.02%	0.6%	9.6%	0.1%	30.4%	19.7%

District Demographic Information (from 2000 U.S. Census)

	AGE				RACE*					
	Total Population	Residents Under 18	Residents Under 5	Residents 65 and Over	White	African American	American Indian	Asian	Other	Hispanic (of any race)
Number	114,570	32,205	9,040	11,657	103,559	1,114	1,827	3,981	7,536	8,730
Percent	100.0%	28.1%	7.9%	10.2%	90.4%	1.0%	1.6%	3.5%	6.6%	7.6%
Statewide Percent		24.7%	6.5%	12.9%	89.2%	2.2%	2.6%	3.6%	5.7%	8.2%

*Total for race may exceed 100% - Includes double-counts for those who indicated more than one race

Source: U.S. Census Bureau, State Legislative District Summary File

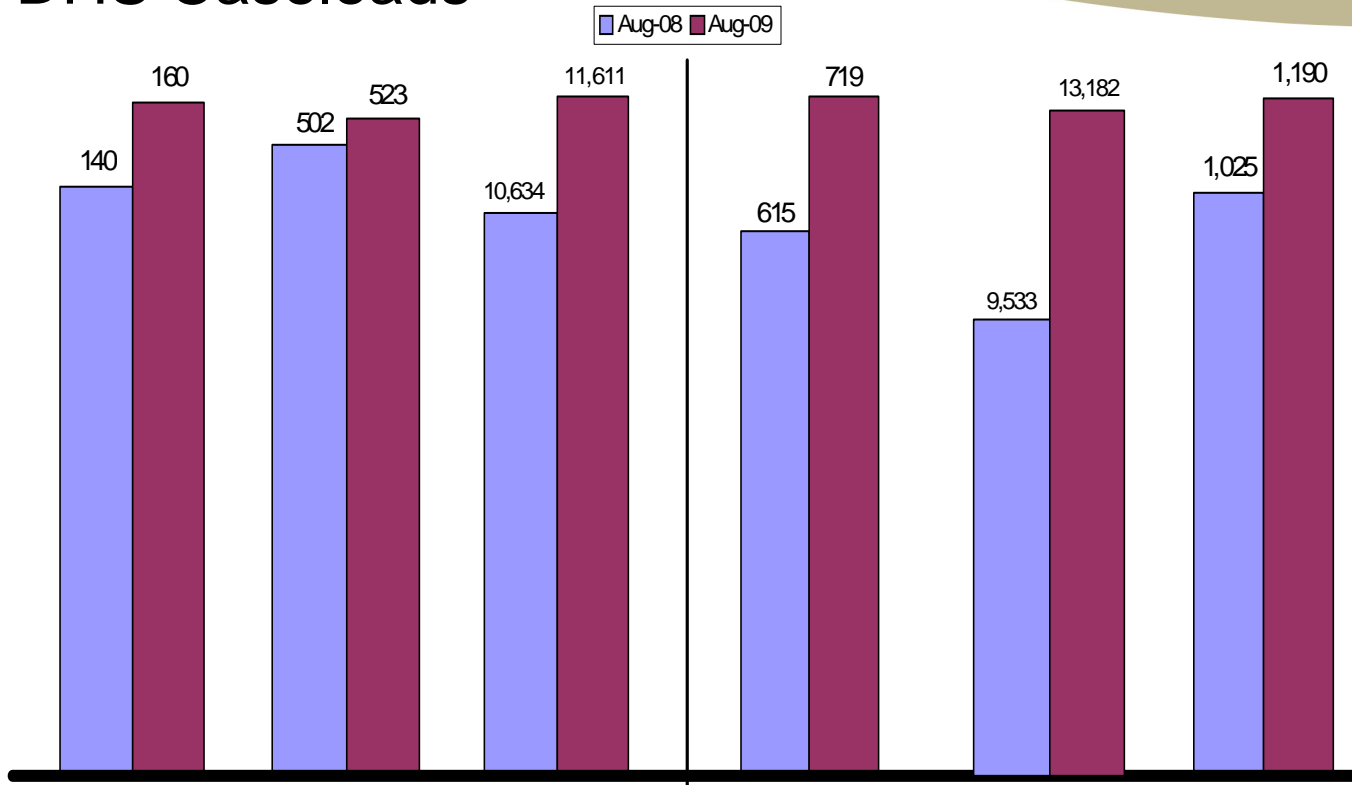
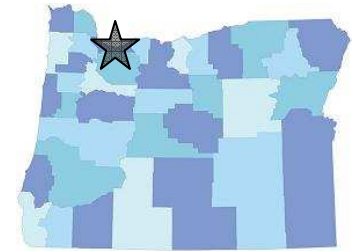
States provided updated boundaries in 2005/2006 as part of Phase 1 of the 2010 Census Redistricting Data Program.



DHS Caseloads

Senate District 14

Senator
Mark Hass



*Long Term Care data from July 2008, July 2009

	Foster Care	Long Term Care*	Oregon Health Plan	Employment Related Daycare	SNAP (Food Stamps)	Temporary Assistance for Needy Families
% Change SD 14	14.3%	4.2%	9.2%	16.9%	38.3%	16.1%
% Change Statewide	-0.02%	0.6%	9.6%	0.1%	30.4%	19.7%

District Demographic Information (from 2000 U.S. Census)										
AGE					RACE*					
	Total Population	Residents Under 18	Residents Under 5	Residents 65 and Over	White	African American	American Indian	Asian	Other	Hispanic (of any race)
Number	115,064	29,943	8,457	11,216	98,334	2,379	1,606	9,574	7,512	7,904
Percent	100.0%	26.0%	7.3%	9.7%	85.5%	2.1%	1.4%	8.3%	6.5%	6.9%
Statewide Percent		24.7%	6.5%	12.9%	89.2%	2.2%	2.6%	3.6%	5.7%	8.2%

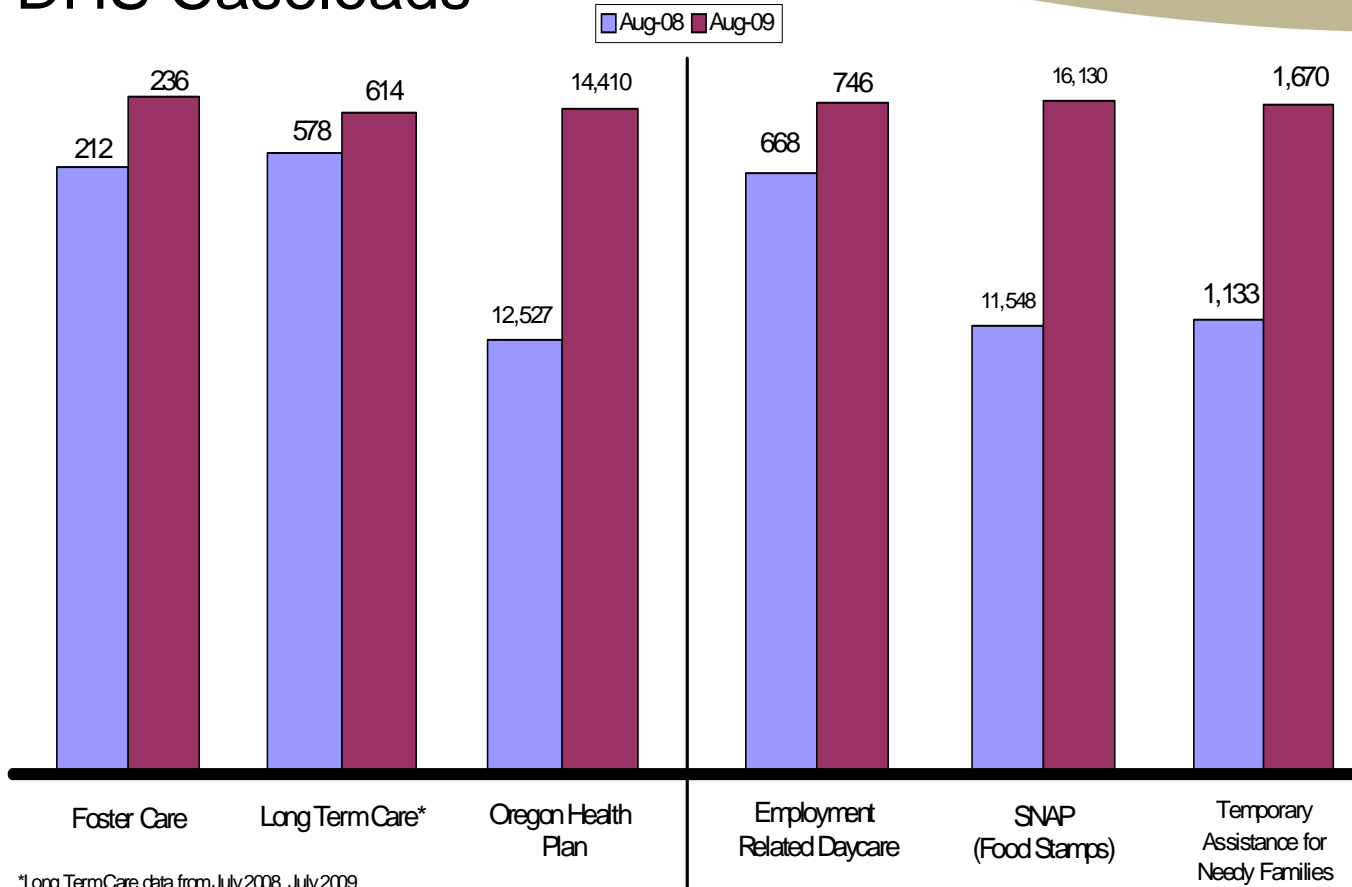
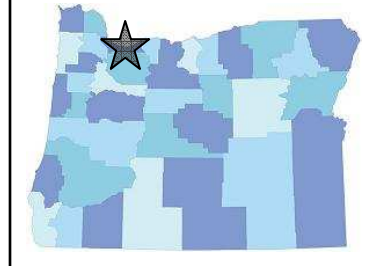
*Total for race may exceed 100% - Includes double-counts for those who indicated more than one race
 Source: U.S. Census Bureau, State Legislative District Summary File
 States provided updated boundaries in 2005/2006 as part of Phase 1 of the 2010 Census Redistricting Data Program.



DHS Caseloads

Senate District 15

Senator
Bruce Starr



*Long Term Care data from July 2008, July 2009

	Foster Care	Long Term Care*	Oregon Health Plan	Employment Related Daycare	SNAP (Food Stamps)	Temporary Assistance for Needy Families
% Change SD 15	11.3%	6.2%	15.0%	11.7%	39.7%	47.4%
% Change Statewide	-0.02%	0.6%	9.6%	0.1%	30.4%	19.7%

District Demographic Information (from 2000 U.S. Census)										
AGE				RACE*						
	Total Population	Residents Under 18	Residents Under 5	Residents 65 and Over	White	African American	American Indian	Asian	Other	Hispanic (of any race)
Number	115,004	32,411	10,123	9,193	94,037	1,622	1,853	7,075	14,478	17,305
Percent	100.0%	28.2%	8.8%	8.0%	81.8%	1.4%	1.6%	6.2%	12.6%	15.0%
Statewide Percent		24.7%	6.5%	12.9%	89.2%	2.2%	2.6%	3.6%	5.7%	8.2%

*Total for race may exceed 100% - Includes double-counts for those who indicated more than one race

Source: U.S. Census Bureau, State Legislative District Summary File

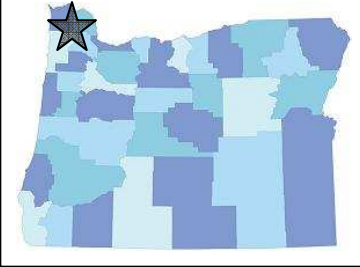
States provided updated boundaries in 2005/2006 as part of Phase 1 of the 2010 Census Redistricting Data Program.



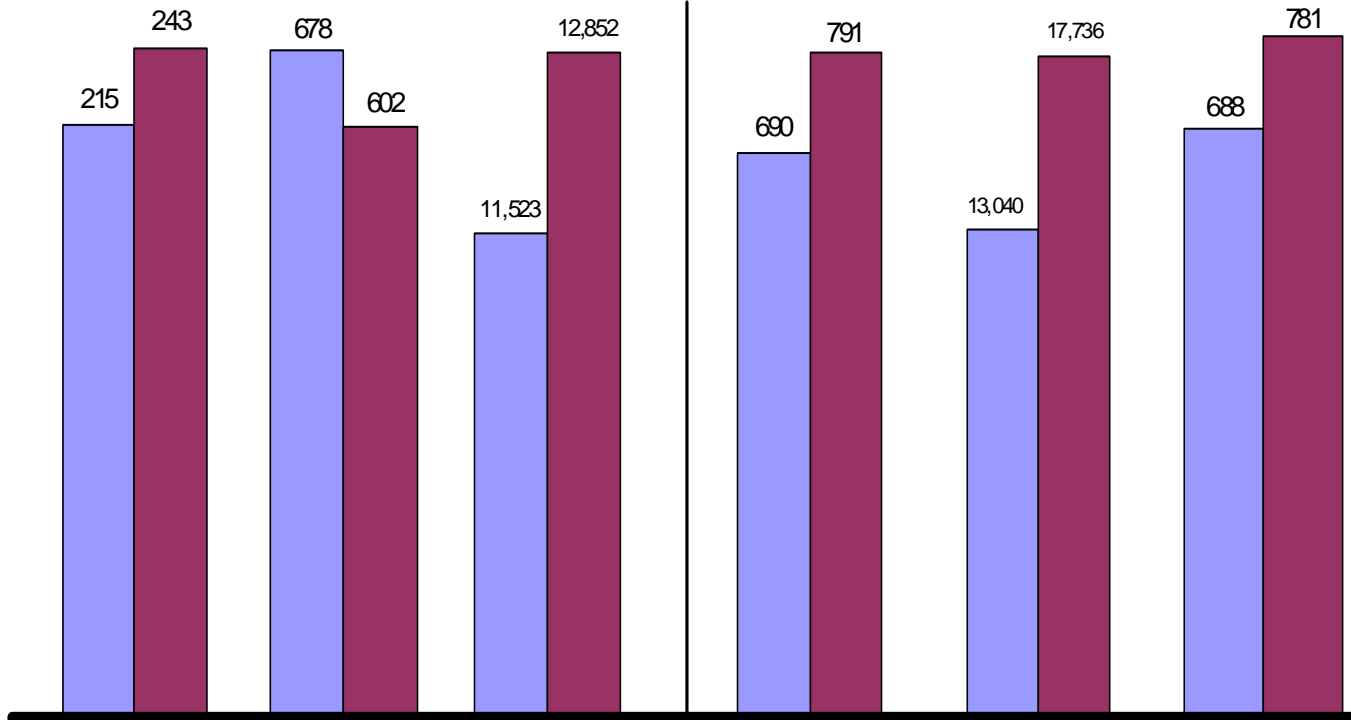
DHS Caseloads

Senate District 16

Senator
Betsy Johnson



Aug-08 Aug-09



Foster Care

Long Term Care*

Oregon Health Plan

Employment Related Daycare

SNAP (Food Stamps)

Temporary Assistance for Needy Families

*Long Term Care data from July 2008, July 2009

	SD 16	Statewide
% Change SD 16	13.0%	-0.02%
% Change Statewide	13.0%	-0.02%

District Demographic Information (from 2000 U.S. Census)										
AGE					RACE*					
	Total Population	Residents Under 18	Residents Under 5	Residents 65 and Over	White	African American	American Indian	Asian	Other	Hispanic (of any race)
Number	114,285	28,613	6,594	16,393	109,602	570	2,736	1,524	2,640	3,367
Percent	100.0%	25.0%	5.8%	14.3%	95.9%	0.5%	2.4%	1.3%	2.3%	2.9%
Statewide Percent		24.7%	6.5%	12.9%	89.2%	2.2%	2.6%	3.6%	5.7%	8.2%

*Total for race may exceed 100% - Includes double-counts for those who indicated more than one race

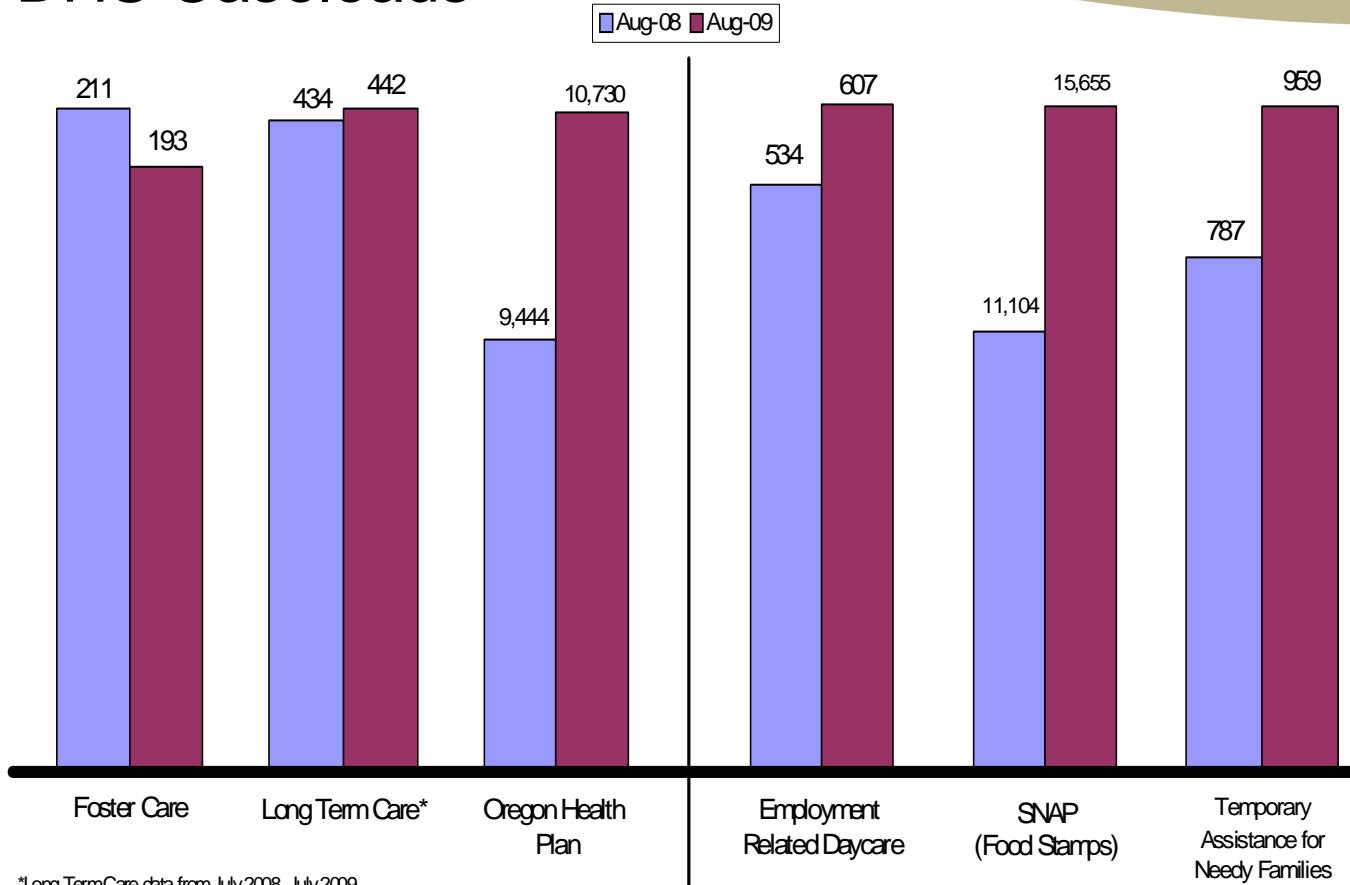
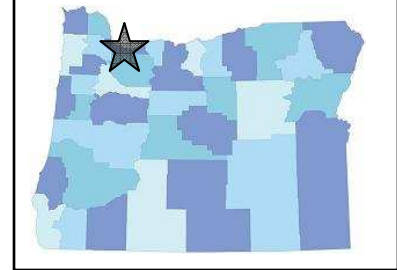
Source: U.S. Census Bureau, State Legislative District Summary File

States provided updated boundaries in 2005/2006 as part of Phase 1 of the 2010 Census Redistricting Data Program.



DHS Caseloads

Senate District 17
 Senator
 Suzanne Bonamici



*Long Term Care data from July 2008, July 2009

	Foster Care	Long Term Care*	Oregon Health Plan	Employment Related Daycare	SNAP (Food Stamps)	Temporary Assistance for Needy Families
% Change SD 17	-8.5%	1.8%	13.6%	13.7%	41.0%	21.9%

	Foster Care	Long Term Care*	Oregon Health Plan	Employment Related Daycare	SNAP (Food Stamps)	Temporary Assistance for Needy Families
% Change Statewide	-0.02%	0.6%	9.6%	0.1%	30.4%	19.7%

District Demographic Information (from 2000 U.S. Census)										
AGE				RACE*						
	Total Population	Residents Under 18	Residents Under 5	Residents 65 and Over	White	African American	American Indian	Asian	Other	Hispanic (of any race)
Number	114,347	26,273	7,643	9,203	95,888	2,457	1,574	12,656	5,561	5,489
Percent	100.0%	23.0%	6.7%	8.0%	83.9%	2.1%	1.4%	11.1%	4.9%	4.8%
Statewide Percent		24.7%	6.5%	12.9%	89.2%	2.2%	2.6%	3.6%	5.7%	8.2%

*Total for race may exceed 100% - Includes double-counts for those who indicated more than one race

Source: U.S. Census Bureau, State Legislative District Summary File

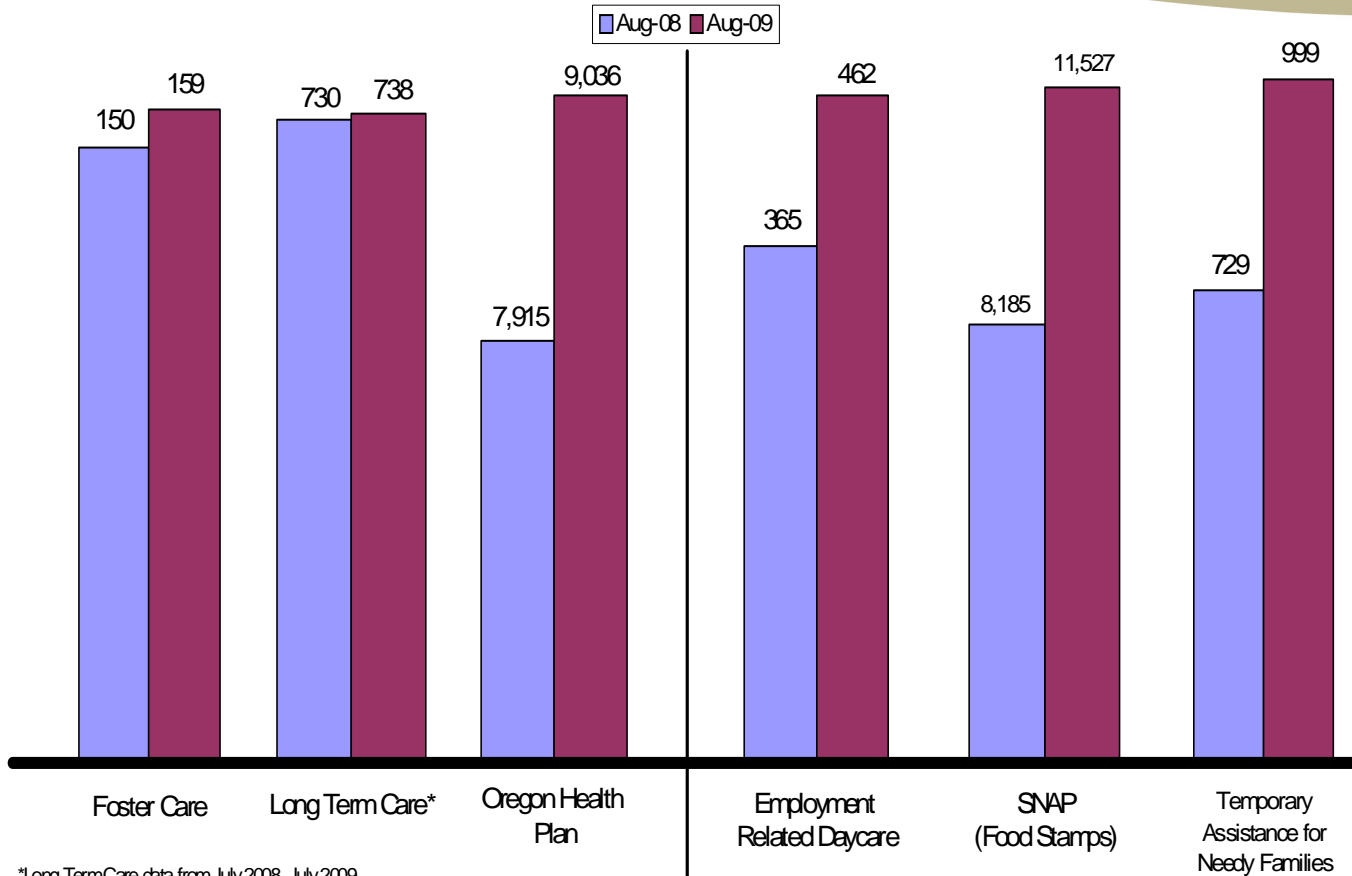
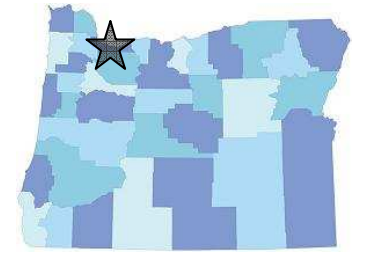
States provided updated boundaries in 2005/2006 as part of Phase 1 of the 2010 Census Redistricting Data Program.



DHS Caseloads

Senate District 18

Senator
Ginny Burdick



*Long Term Care data from July 2008, July 2009

	Foster Care	Long Term Care*	Oregon Health Plan	Employment Related Daycare	SNAP (Food Stamps)	Temporary Assistance for Needy Families
% Change SD 18	6.0%	1.1%	14.2%	26.6%	40.8%	37.0%
% Change Statewide	-0.02%	0.6%	9.6%	0.1%	30.4%	19.7%

District Demographic Information (from 2000 U.S. Census)										
AGE				RACE*						
	Total Population	Residents Under 18	Residents Under 5	Residents 65 and Over	White	African American	American Indian	Asian	Other	Hispanic (of any race)
Number	114,047	22,129	6,471	14,355	101,430	2,842	1,735	7,173	4,666	4,724
Percent	100.0%	19.4%	5.7%	12.6%	88.9%	2.5%	1.5%	6.3%	4.1%	4.1%
Statewide Percent		24.7%	6.5%	12.9%	89.2%	2.2%	2.6%	3.6%	5.7%	8.2%

*Total for race may exceed 100% - Includes double-counts for those who indicated more than one race

Source: U.S. Census Bureau, State Legislative District Summary File

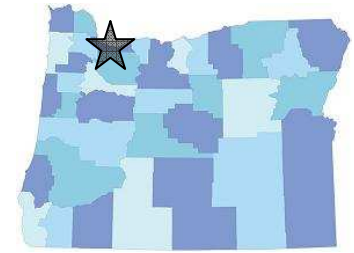
States provided updated boundaries in 2005/2006 as part of Phase 1 of the 2010 Census Redistricting Data Program.



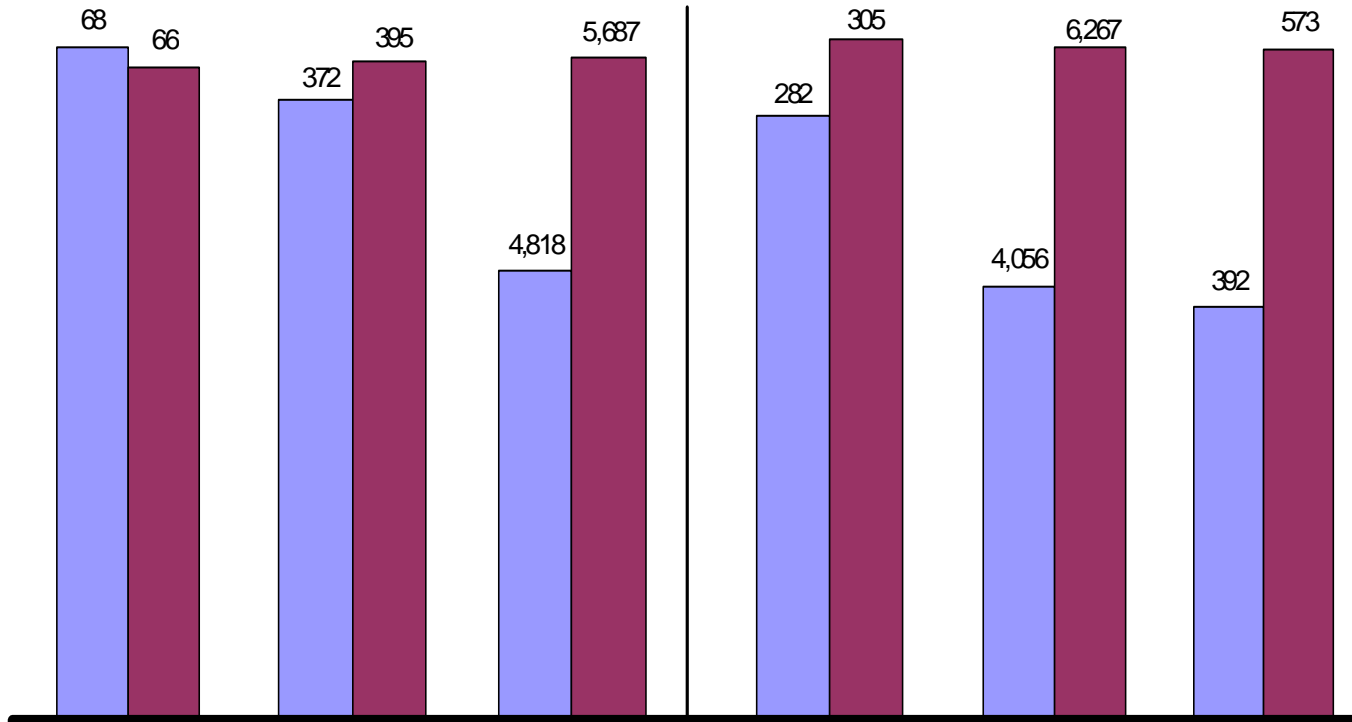
DHS Caseloads

Senate District 19

Senator
Richard Devlin



Aug-08 Aug-09



Foster Care

Long Term Care*

Oregon Health Plan

Employment Related Daycare

SNAP (Food Stamps)

Temporary Assistance for Needy Families

*Long Term Care data from July 2008, July 2009

	Foster Care	Long Term Care*	Oregon Health Plan	Employment Related Daycare	SNAP (Food Stamps)	Temporary Assistance for Needy Families
% Change SD 19	-2.9%	6.2%	18.0%	8.2%	54.5%	46.2%
% Change Statewide	-0.02%	0.6%	9.6%	0.1%	30.4%	19.7%

District Demographic Information (from 2000 U.S. Census)

	AGE				RACE*					
	Total Population	Residents Under 18	Residents Under 5	Residents 65 and Over	White	African American	American Indian	Asian	Other	Hispanic (of any race)
Number	113,554	29,484	6,772	10,664	105,752	1,225	1,168	5,324	3,171	3,672
Percent	100.0%	26.0%	6.0%	9.4%	93.1%	1.1%	1.0%	4.7%	2.8%	3.2%
Statewide Percent		24.7%	6.5%	12.9%	89.2%	2.2%	2.6%	3.6%	5.7%	8.2%

*Total for race may exceed 100% - Includes double-counts for those who indicated more than one race

Source: U.S. Census Bureau, State Legislative District Summary File

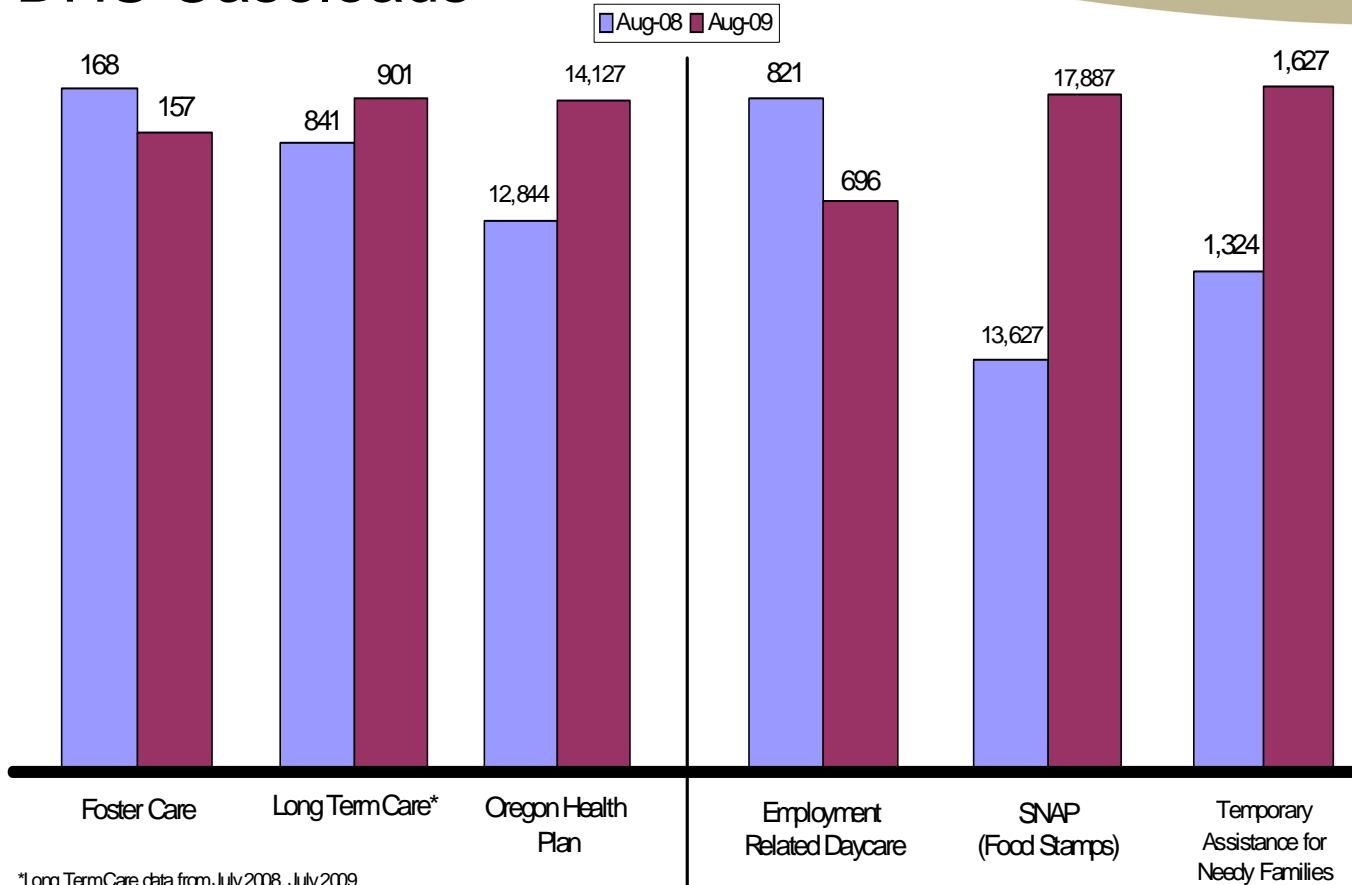
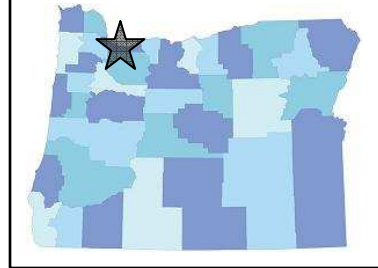
States provided updated boundaries in 2005/2006 as part of Phase 1 of the 2010 Census Redistricting Data Program.



DHS Caseloads

Senate District 20

Senator
Martha Schrader



*Long Term Care data from July 2008, July 2009

	Foster Care	Long Term Care*	Oregon Health Plan	Employment Related Daycare	SNAP (Food Stamps)	Temporary Assistance for Needy Families
% Change SD 20	-6.5%	7.1%	10.0%	-15.2%	31.3%	22.9%
% Change Statewide	-0.02%	0.6%	9.6%	0.1%	30.4%	19.7%

District Demographic Information (from 2000 U.S. Census)										
AGE				RACE*						
	Total Population	Residents Under 18	Residents Under 5	Residents 65 and Over	White	African American	American Indian	Asian	Other	Hispanic (of any race)
Number	114,063	29,454	8,054	14,109	106,908	1,203	1,881	2,461	4,733	5,753
Percent	100.0%	25.8%	7.1%	12.4%	93.7%	1.1%	1.6%	2.2%	4.1%	5.0%
Statewide Percent		24.7%	6.5%	12.9%	89.2%	2.2%	2.6%	3.6%	5.7%	8.2%

*Total for race may exceed 100% - Includes double-counts for those who indicated more than one race

Source: U.S. Census Bureau, State Legislative District Summary File

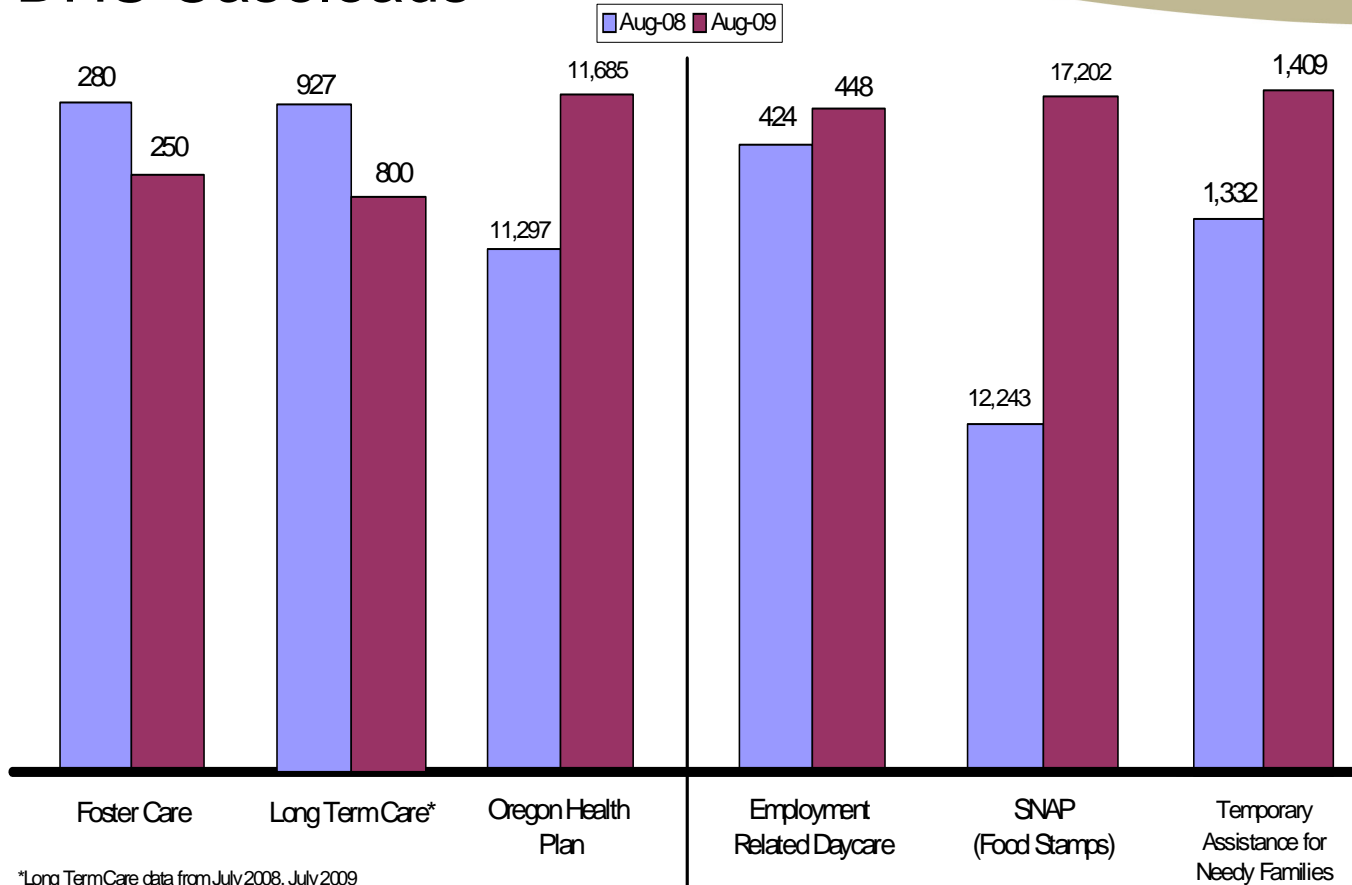
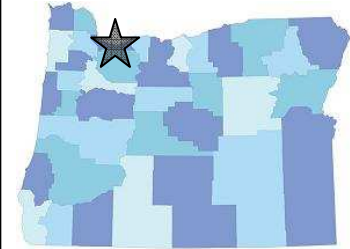
States provided updated boundaries in 2005/2006 as part of Phase 1 of the 2010 Census Redistricting Data Program.



DHS Caseloads

Senate District 21

Senator
Diane Rosenbaum



*Long Term Care data from July 2008, July 2009

	Foster Care	Long Term Care*	Oregon Health Plan	Employment Related Daycare	SNAP (Food Stamps)	Temporary Assistance for Needy Families
% Change SD 21	-10.7%	-13.7%	3.4%	5.7%	40.5%	5.8%
% Change Statewide	-0.02%	0.6%	9.6%	0.1%	30.4%	19.7%

District Demographic Information (from 2000 U.S. Census)										
AGE				RACE*						
	Total Population	Residents Under 18	Residents Under 5	Residents 65 and Over	White	African American	American Indian	Asian	Other	Hispanic (of any race)
Number	114,163	20,863	6,193	12,729	101,787	3,121	2,557	6,982	4,216	3,581
Percent	100.0%	18.3%	5.4%	11.1%	89.2%	2.7%	2.2%	6.1%	3.7%	3.1%
Statewide Percent		24.7%	6.5%	12.9%	89.2%	2.2%	2.6%	3.6%	5.7%	8.2%

*Total for race may exceed 100% - Includes double-counts for those who indicated more than one race

Source: U.S. Census Bureau, State Legislative District Summary File

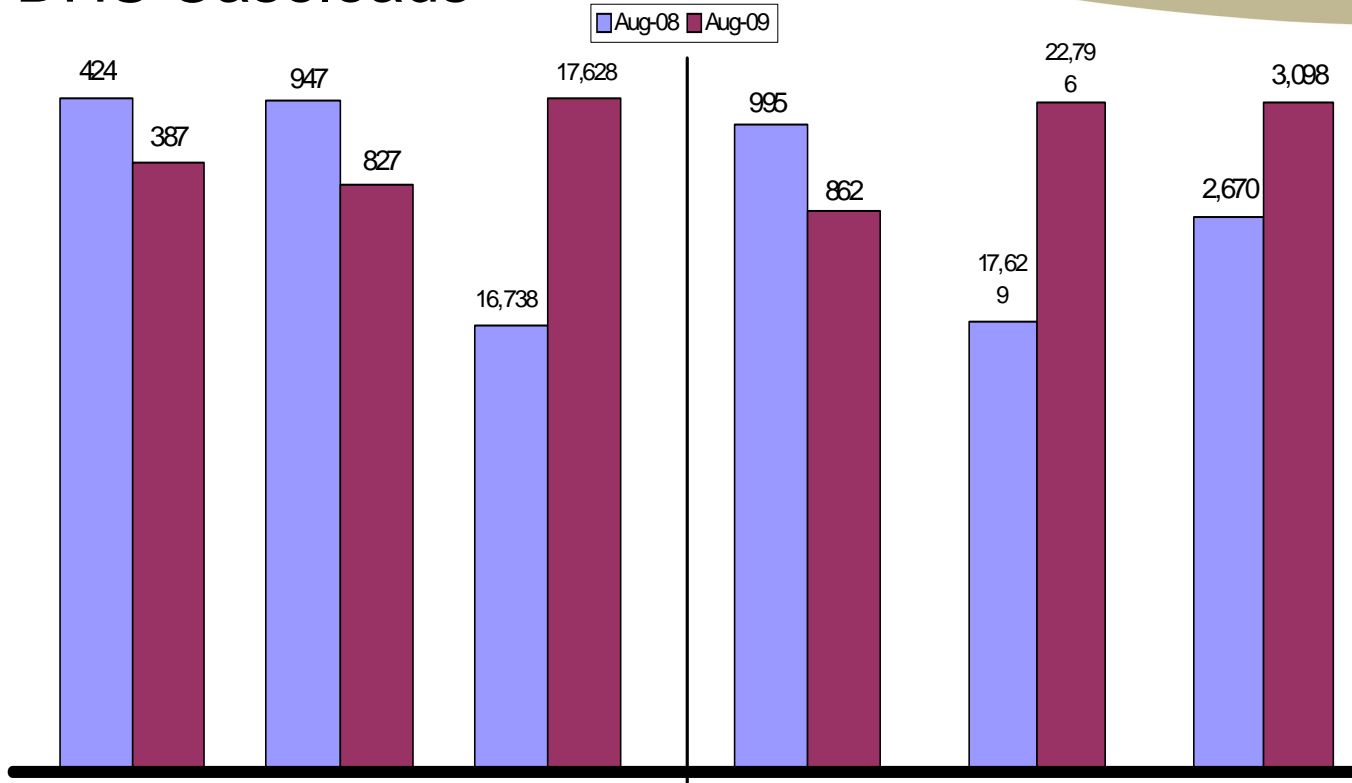
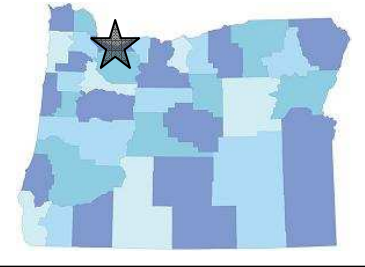
States provided updated boundaries in 2005/2006 as part of Phase 1 of the 2010 Census Redistricting Data Program.



DHS Caseloads

Senate District 22

Senator
Chip Shields



*Long Term Care data from July 2008, July 2009

	Foster Care	Long Term Care*	Oregon Health Plan	Employment Related Daycare	SNAP (Food Stamps)	Temporary Assistance for Needy Families
% Change SD 22	-8.7%	-12.7%	5.3%	-13.4%	29.3%	16.0%
% Change Statewide	-0.02%	0.6%	9.6%	0.1%	30.4%	19.7%

District Demographic Information (from 2000 U.S. Census)										
AGE				RACE*						
	Total Population	Residents Under 18	Residents Under 5	Residents 65 and Over	White	African American	American Indian	Asian	Other	Hispanic (of any race)
Number	114,141	27,265	7,927	11,122	75,104	26,938	3,969	5,976	9,519	8,217
Percent	100.0%	23.9%	6.9%	9.7%	65.8%	23.6%	3.5%	5.2%	8.3%	7.2%
Statewide Percent		24.7%	6.5%	12.9%	89.2%	2.2%	2.6%	3.6%	5.7%	8.2%

*Total for race may exceed 100% - Includes double-counts for those who indicated more than one race

Source: U.S. Census Bureau, State Legislative District Summary File

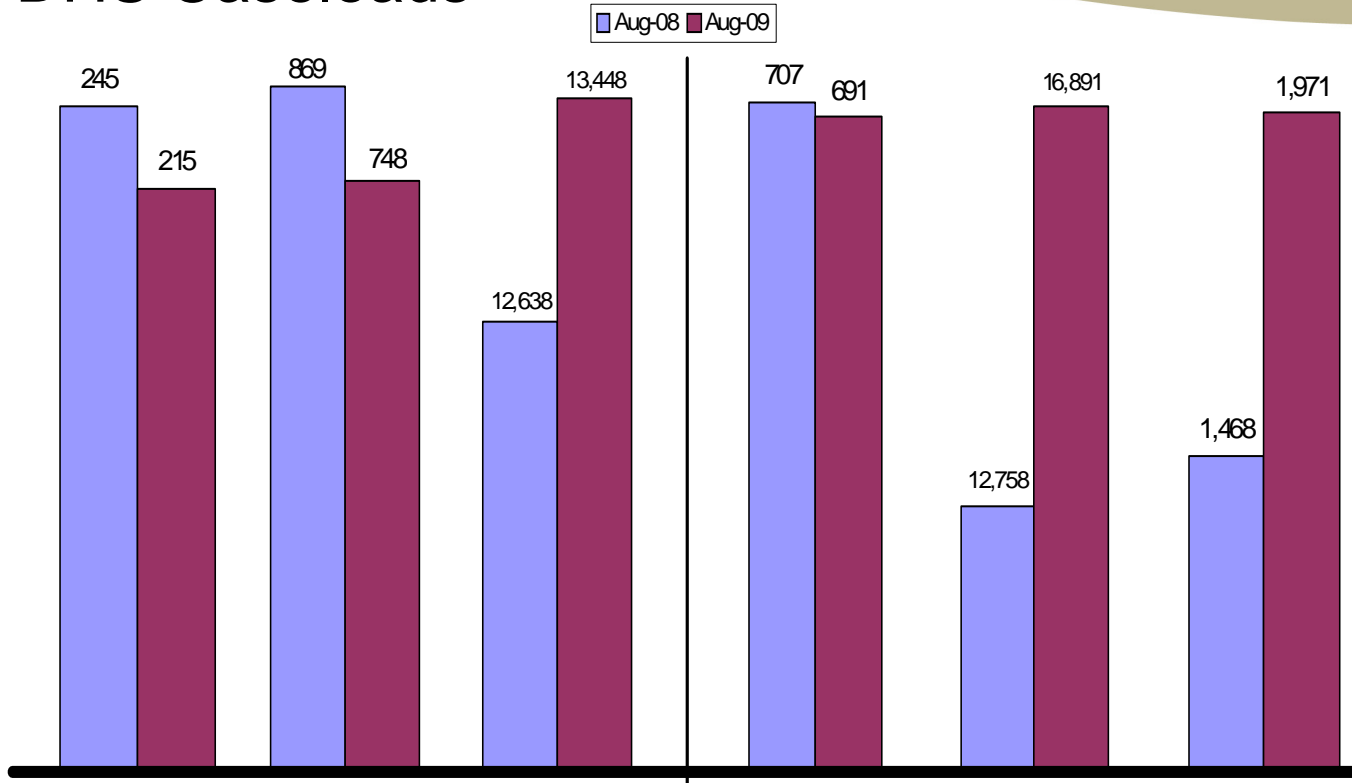
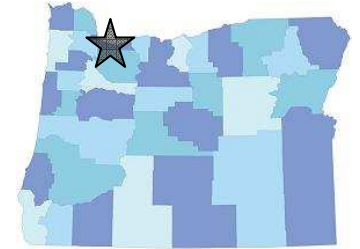
States provided updated boundaries in 2005/2006 as part of Phase 1 of the 2010 Census Redistricting Data Program.



DHS Caseloads

Senate District 23

Senator
Jackie Dingfelder



	Foster Care	Long Term Care*	Oregon Health Plan	Employment Related Daycare	SNAP (Food Stamps)	Temporary Assistance for Needy Families
*Long Term Care data from July 2008, July 2009						
% Change SD 23	-12.2%	-13.9%	6.4%	-2.3%	32.4%	34.3%
% Change Statewide	-0.02%	0.6%	9.6%	0.1%	30.4%	19.7%

District Demographic Information (from 2000 U.S. Census)										
AGE				RACE*						
	Total Population	Residents Under 18	Residents Under 5	Residents 65 and Over	White	African American	American Indian	Asian	Other	Hispanic (of any race)
Number	114,123	25,022	7,153	13,806	93,913	5,211	2,196	11,708	5,857	4,832
Percent	100.0%	21.9%	6.3%	12.1%	82.3%	4.6%	1.9%	10.3%	5.1%	4.2%
Statewide Percent		24.7%	6.5%	12.9%	89.2%	2.2%	2.6%	3.6%	5.7%	8.2%

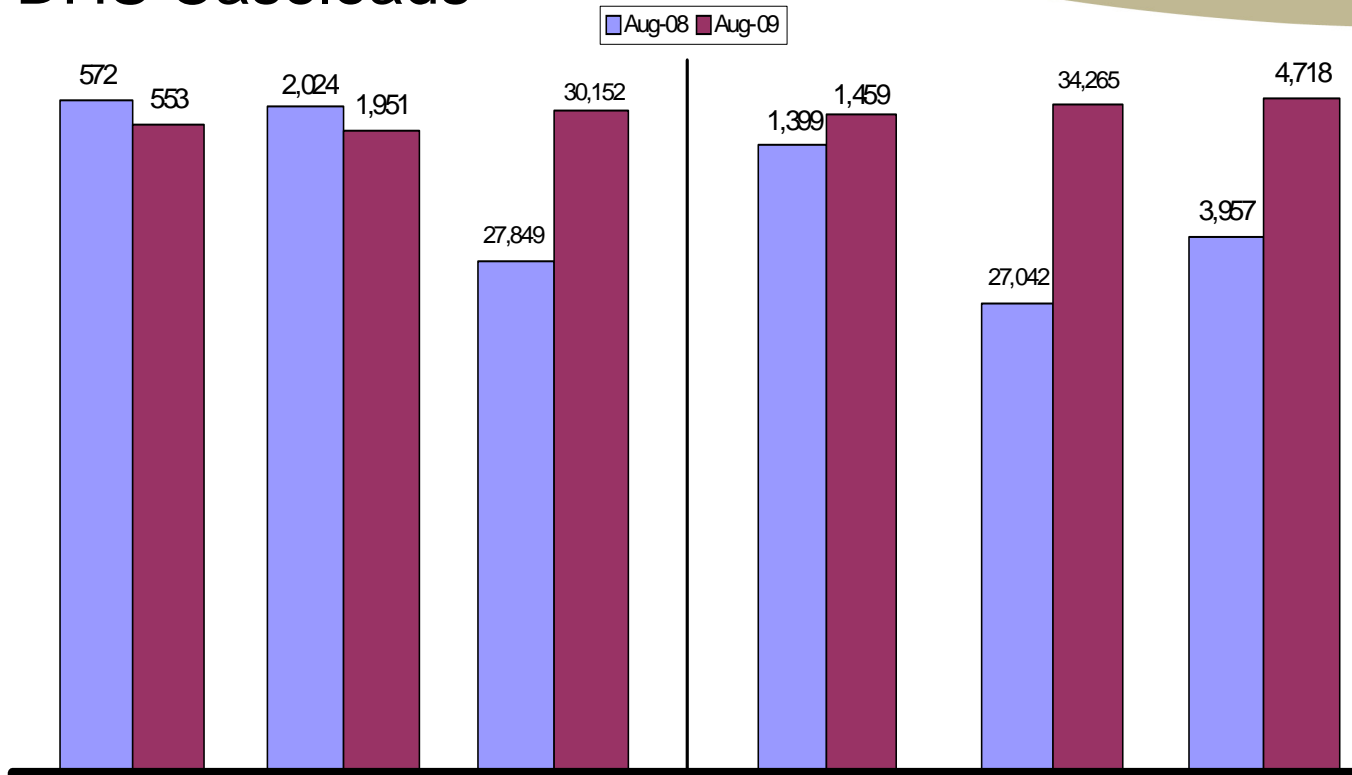
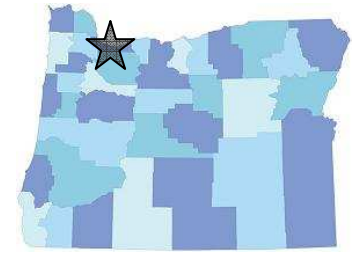
*Total for race may exceed 100% - Includes double-counts for those who indicated more than one race
 Source: U.S. Census Bureau, State Legislative District Summary File
 States provided updated boundaries in 2005/2006 as part of Phase 1 of the 2010 Census Redistricting Data Program.



DHS Caseloads

Senate District 24

Senator
Rod Monroe



*Long Term Care data from July 2008, July 2009

	Foster Care	Long Term Care*	Oregon Health Plan	Employment Related Daycare	SNAP (Food Stamps)	Temporary Assistance for Needy Families
% Change SD 24	-3.3%	-3.6%	8.3%	4.3%	26.7%	19.2%
% Change Statewide	-0.02%	0.6%	9.6%	0.1%	30.4%	19.7%

District Demographic Information (from 2000 U.S. Census)										
AGE				RACE*						
	Total Population	Residents Under 18	Residents Under 5	Residents 65 and Over	White	African American	American Indian	Asian	Other	Hispanic (of any race)
Number	113,354	29,785	8,521	15,791	94,245	3,738	2,152	10,469	7,470	6,788
Percent	100.0%	26.3%	7.5%	13.9%	83.1%	3.3%	1.9%	9.2%	6.6%	6.0%
Statewide Percent		24.7%	6.5%	12.9%	89.2%	2.2%	2.6%	3.6%	5.7%	8.2%

*Total for race may exceed 100% - Includes double-counts for those who indicated more than one race

Source: U.S. Census Bureau, State Legislative District Summary File

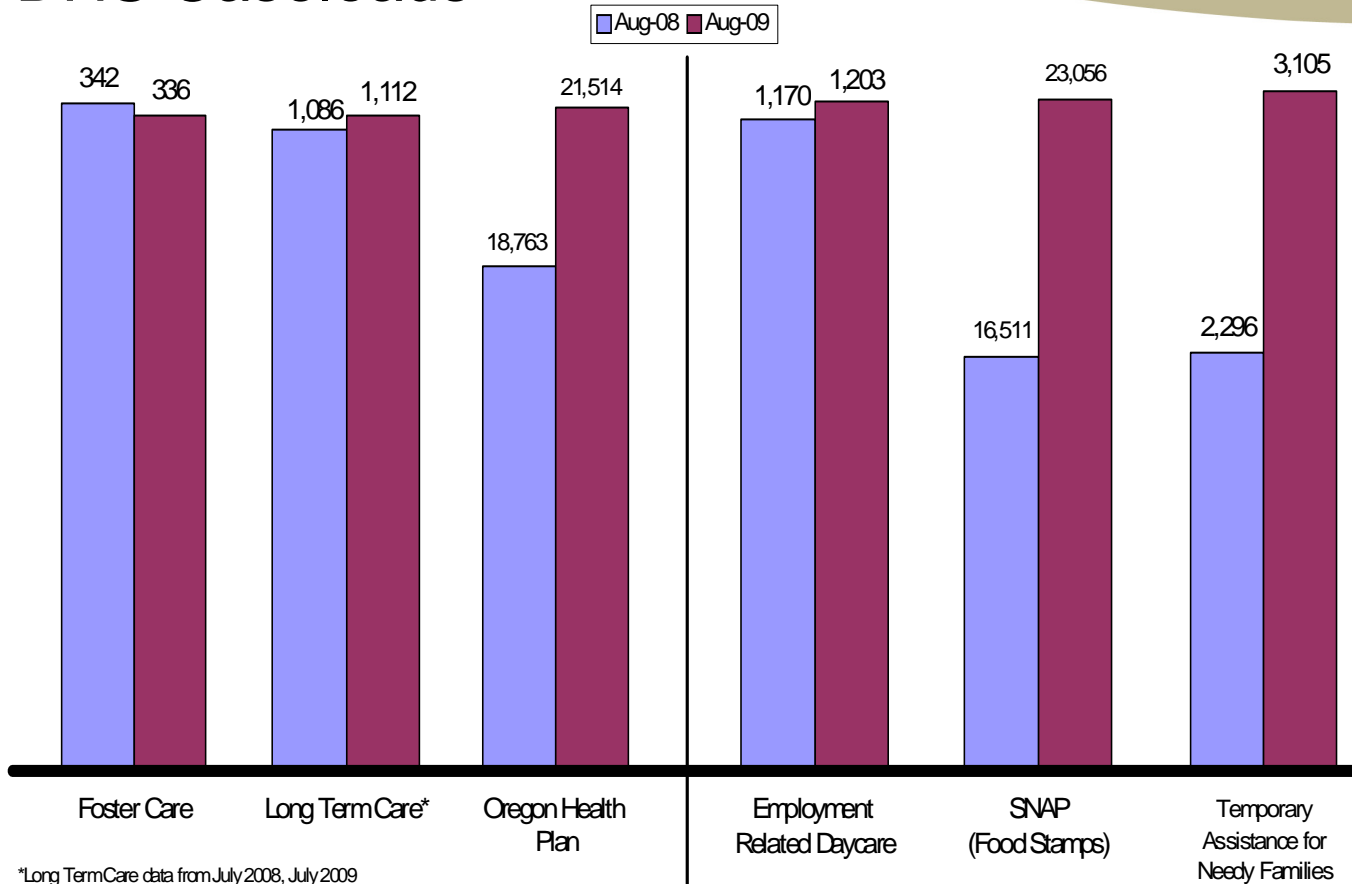
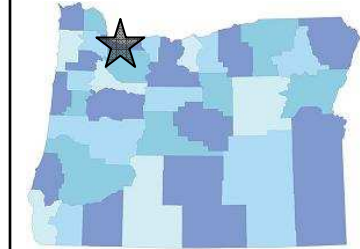
States provided updated boundaries in 2005/2006 as part of Phase 1 of the 2010 Census Redistricting Data Program.



DHS Caseloads

Senate District 25

Senator Laurie Monnes Anderson



*Long Term Care data from July 2008, July 2009

	Foster Care	Long Term Care*	Oregon Health Plan	Employment Related Daycare	SNAP (Food Stamps)	Temporary Assistance for Needy Families
% Change SD 25	-1.8%	2.4%	14.7%	2.8%	39.6%	35.2%
% Change Statewide	-0.02%	0.6%	9.6%	0.1%	30.4%	19.7%

District Demographic Information (from 2000 U.S. Census)										
AGE				RACE*						
	Total Population	Residents Under 18	Residents Under 5	Residents 65 and Over	White	African American	American Indian	Asian	Other	Hispanic (of any race)
Number	114,857	32,027	9,327	10,317	99,172	3,038	2,294	5,118	10,086	10,533
Percent	100.0%	27.9%	8.1%	9.0%	86.3%	2.6%	2.0%	4.5%	8.8%	9.2%
Statewide Percent		24.7%	6.5%	12.9%	89.2%	2.2%	2.6%	3.6%	5.7%	8.2%

*Total for race may exceed 100% - Includes double-counts for those who indicated more than one race

Source: U.S. Census Bureau, State Legislative District Summary File

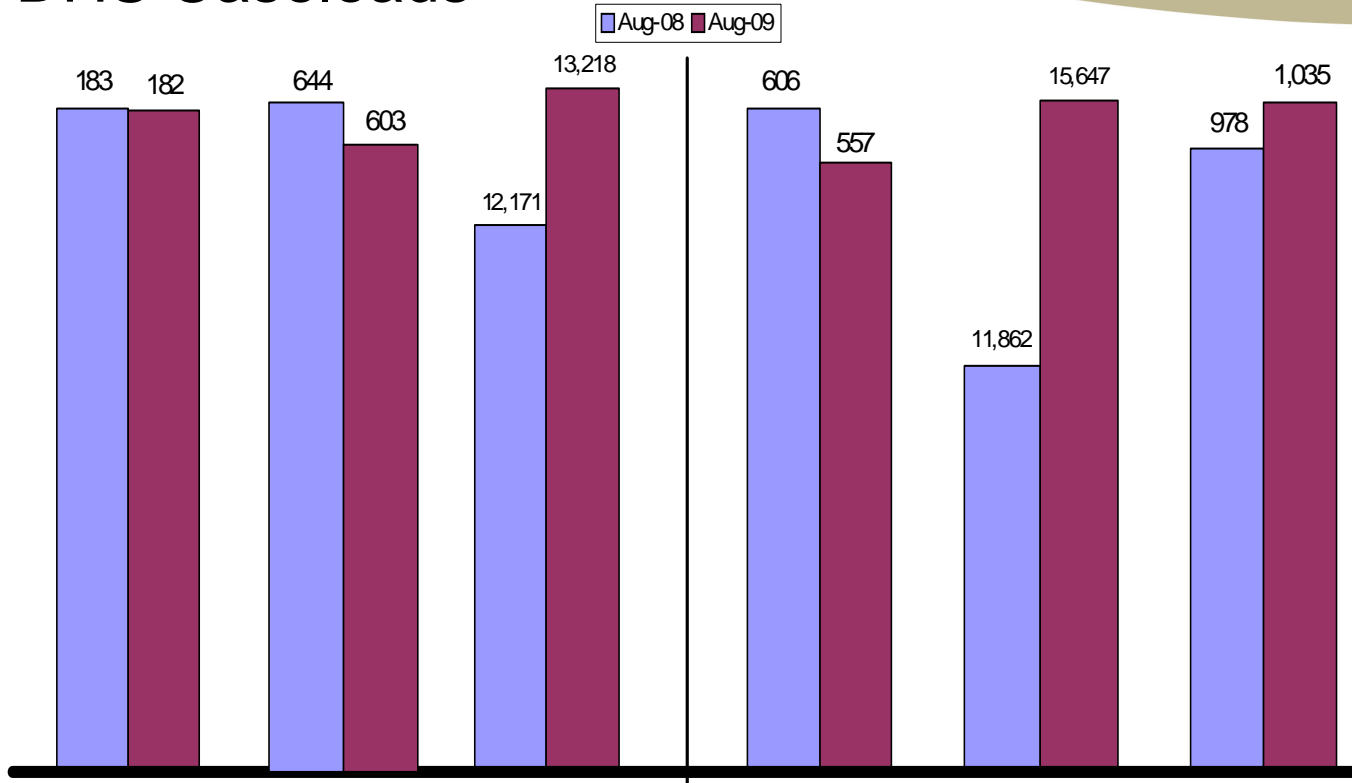
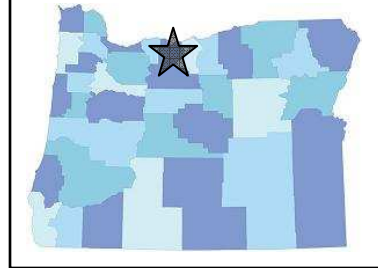
States provided updated boundaries in 2005/2006 as part of Phase 1 of the 2010 Census Redistricting Data Program.



DHS Caseloads

Senate District 26

Senator
Rick Metsger



*Long Term Care data from July 2008, July 2009

	Foster Care	Long Term Care*	Oregon Health Plan	Employment Related Daycare	SNAP (Food Stamps)	Temporary Assistance for Needy Families
% Change SD 26	-0.5%	-6.4%	8.6%	-8.1%	31.9%	5.8%
% Change Statewide	-0.02%	0.6%	9.6%	0.1%	30.4%	19.7%

District Demographic Information (from 2000 U.S. Census)										
AGE					RACE*					
	Total Population	Residents Under 18	Residents Under 5	Residents 65 and Over	White	African American	American Indian	Asian	Other	Hispanic (of any race)
Number	113,405	29,449	7,147	11,792	102,849	1,190	2,105	3,627	6,770	8,062
Percent	100.0%	26.0%	6.3%	10.4%	90.7%	1.0%	1.9%	3.2%	6.0%	7.1%
Statewide Percent		24.7%	6.5%	12.9%	89.2%	2.2%	2.6%	3.6%	5.7%	8.2%

*Total for race may exceed 100% - Includes double-counts for those who indicated more than one race

Source: U.S. Census Bureau, State Legislative District Summary File

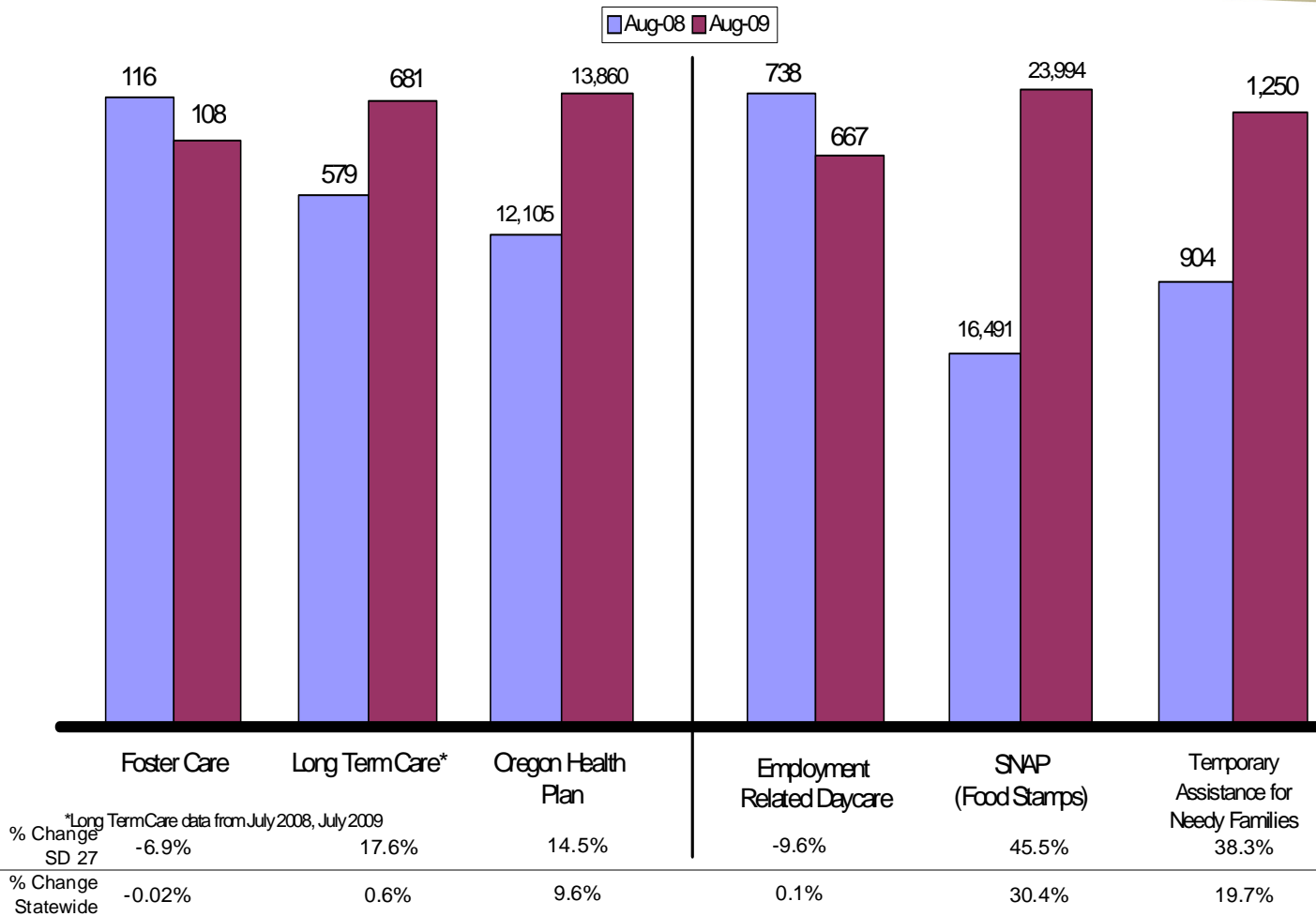
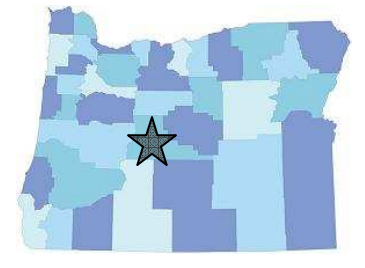
States provided updated boundaries in 2005/2006 as part of Phase 1 of the 2010 Census Redistricting Data Program.



DHS Caseloads

Senate District 27

Senator
Chris Telfer



*Long Term Care data from July 2008, July 2009

District Demographic Information (from 2000 U.S. Census)										
AGE				RACE*						
	Total Population	Residents Under 18	Residents Under 5	Residents 65 and Over	White	African American	American Indian	Asian	Other	Hispanic (of any race)
Number	113,606	28,219	7,005	14,771	109,846	441	2,042	1,360	2,332	3,103
Percent	100.0%	24.8%	6.2%	13.0%	96.7%	0.4%	1.8%	1.2%	2.0%	2.7%
Statewide Percent		24.7%	6.5%	12.9%	89.2%	2.2%	2.6%	3.6%	5.7%	8.2%

*Total for race may exceed 100% - Includes double-counts for those who indicated more than one race

Source: U.S. Census Bureau, State Legislative District Summary File

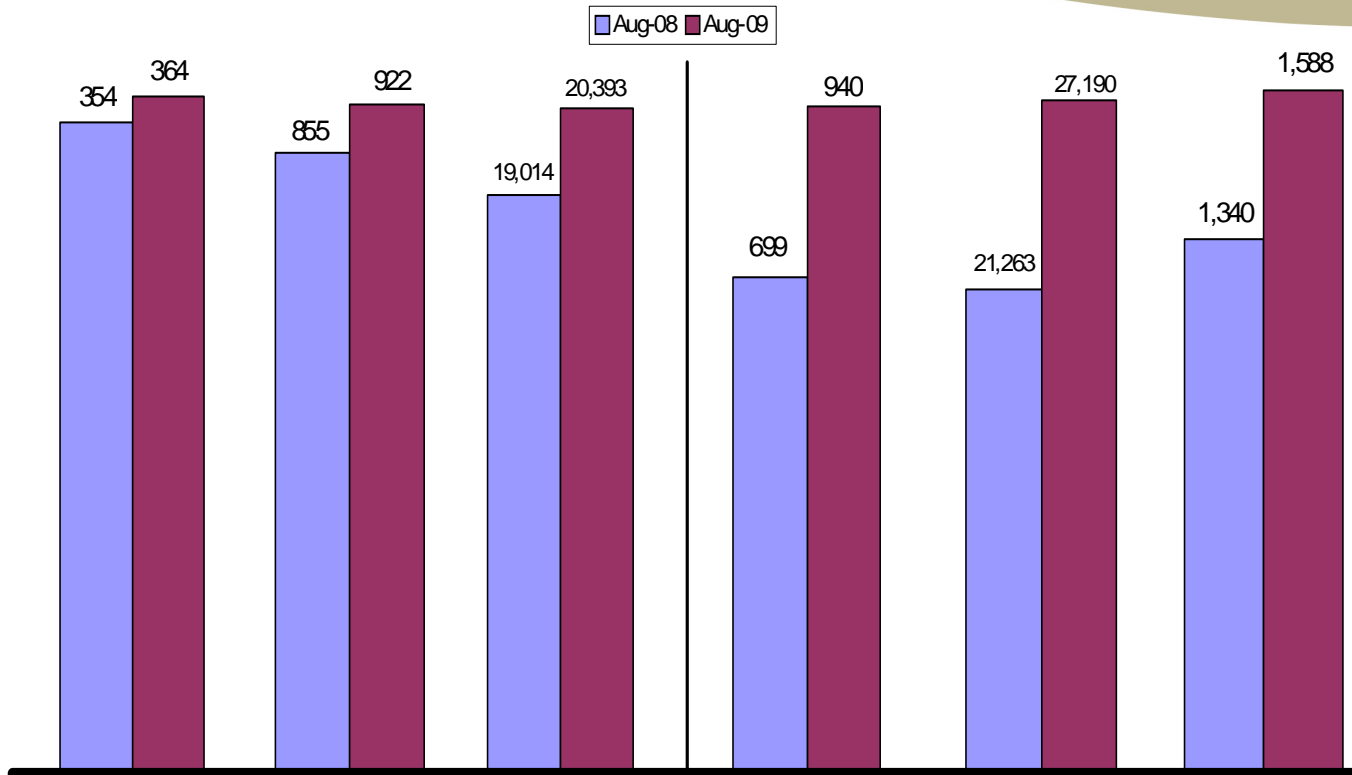
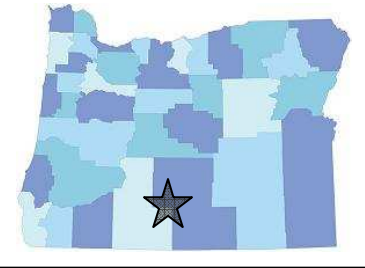
States provided updated boundaries in 2005/2006 as part of Phase 1 of the 2010 Census Redistricting Data Program.



DHS Caseloads

Senate District 28

Senator
Doug Whitsett



	Foster Care	Long Term Care*	Oregon Health Plan	Employment Related Daycare	SNAP (Food Stamps)	Temporary Assistance for Needy Families
*Long Term Care data from July 2008, July 2009						
% Change SD 28	2.8%	7.8%	7.3%	34.5%	27.9%	18.5%
% Change Statewide	-0.02%	0.6%	9.6%	0.1%	30.4%	19.7%

District Demographic Information (from 2000 U.S. Census)										
AGE					RACE*					
	Total Population	Residents Under 18	Residents Under 5	Residents 65 and Over	White	African American	American Indian	Asian	Other	Hispanic (of any race)
Number	114,550	30,008	7,277	16,621	105,678	844	5,336	1,201	5,054	6,583
Percent	100.0%	26.2%	6.4%	14.5%	92.3%	0.7%	4.7%	1.0%	4.4%	5.7%
Statewide Percent		24.7%	6.5%	12.9%	89.2%	2.2%	2.6%	3.6%	5.7%	8.2%

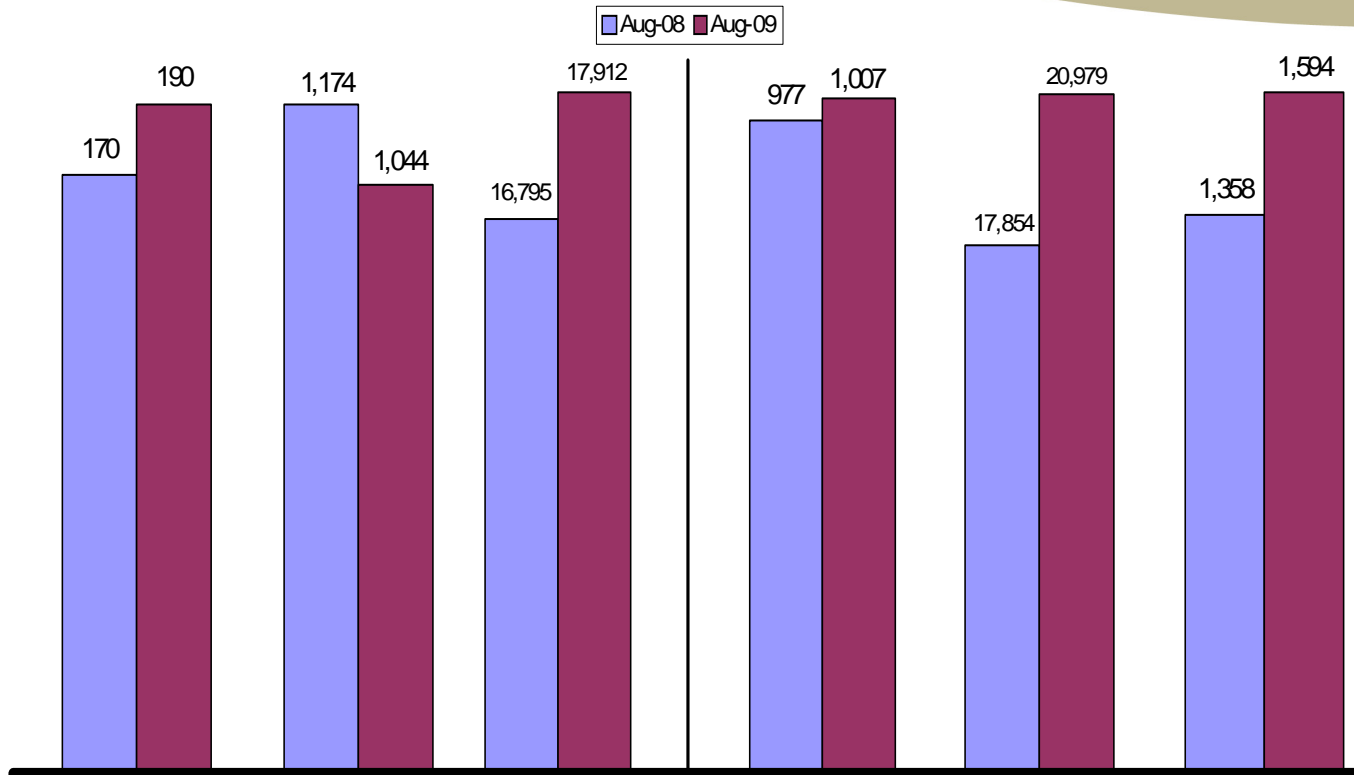
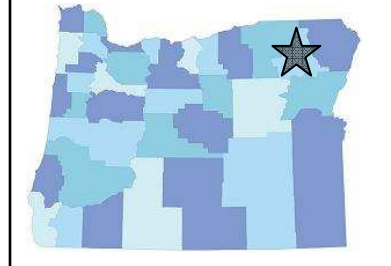
*Total for race may exceed 100% - Includes double-counts for those who indicated more than one race
 Source: U.S. Census Bureau, State Legislative District Summary File
 States provided updated boundaries in 2005/2006 as part of Phase 1 of the 2010 Census Redistricting Data Program.



DHS Caseloads

Senate District 29

Senator
David Nelson



*Long Term Care data from July 2008, July 2009

	Foster Care	Long Term Care*	Oregon Health Plan	Employment Related Daycare	SNAP (Food Stamps)	Temporary Assistance for Needy Families
% Change SD 29	11.8%	-11.1%	6.7%	3.1%	17.5%	17.4%
% Change Statewide	-0.02%	0.6%	9.6%	0.1%	30.4%	19.7%

District Demographic Information (from 2000 U.S. Census)										
AGE				RACE*						
	Total Population	Residents Under 18	Residents Under 5	Residents 65 and Over	White	African American	American Indian	Asian	Other	Hispanic (of any race)
Number	113,299	30,778	8,041	14,829	98,437	1,003	3,764	1,134	11,399	12,447
Percent	100.0%	27.2%	7.1%	13.1%	86.9%	0.9%	3.3%	1.0%	10.1%	11.0%
Statewide Percent		24.7%	6.5%	12.9%	89.2%	2.2%	2.6%	3.6%	5.7%	8.2%

*Total for race may exceed 100% - Includes double-counts for those who indicated more than one race

Source: U.S. Census Bureau, State Legislative District Summary File

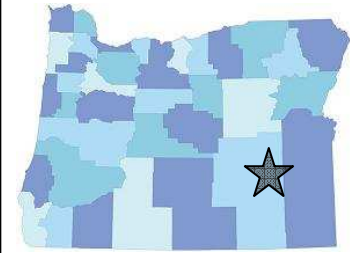
States provided updated boundaries in 2005/2006 as part of Phase 1 of the 2010 Census Redistricting Data Program.



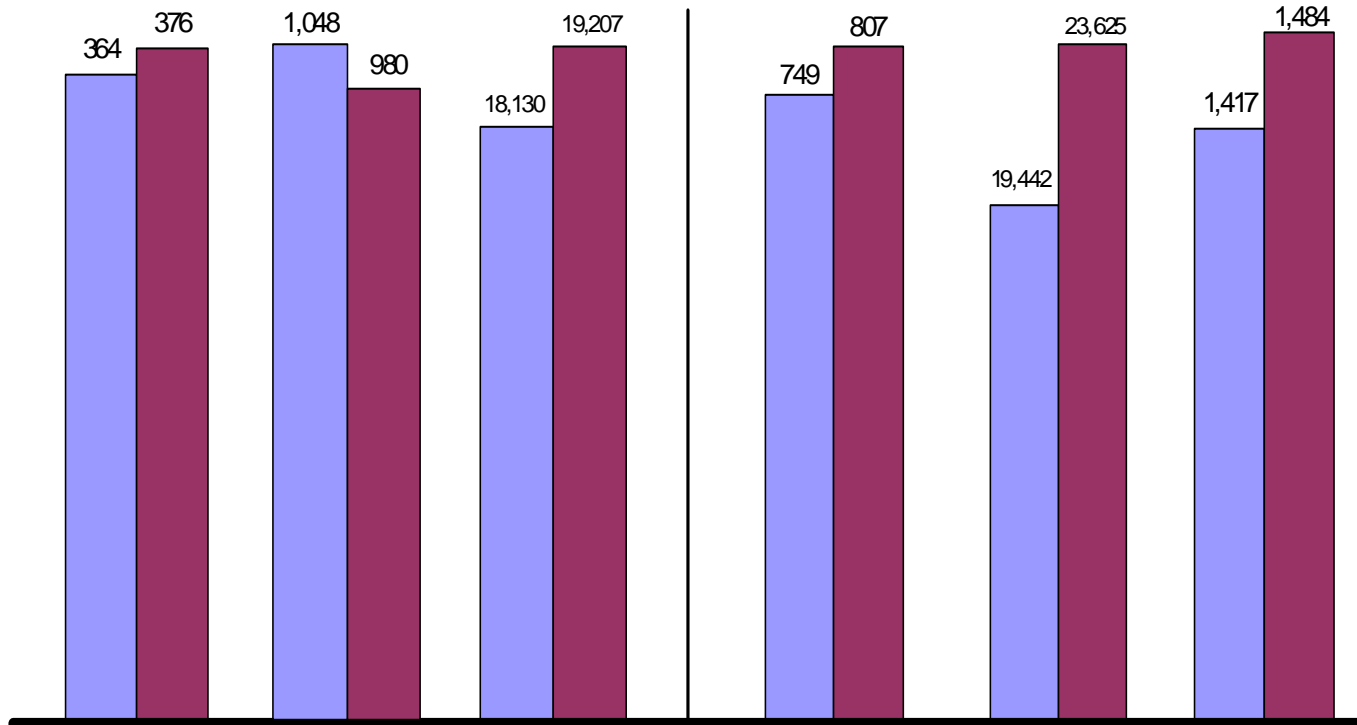
DHS Caseloads

Senate District 30

Senator
Ted Ferrioli



Aug-08 Aug-09



Foster Care

Long Term Care*

Oregon Health Plan

Employment Related Daycare

SNAP (Food Stamps)

Temporary Assistance for Needy Families

*Long Term Care data from July 2008, July 2009

	Foster Care	Long Term Care*	Oregon Health Plan	Employment Related Daycare	SNAP (Food Stamps)	Temporary Assistance for Needy Families
% Change SD 30	3.3%	-6.5%	5.9%	7.7%	21.5%	4.7%
% Change Statewide	-0.02%	0.6%	9.6%	0.1%	30.4%	19.7%

District Demographic Information (from 2000 U.S. Census)

	AGE				RACE*					
	Total Population	Residents Under 18	Residents Under 5	Residents 65 and Over	White	African American	American Indian	Asian	Other	Hispanic (of any race)
Number	113,415	30,078	7,481	17,666	97,108	791	6,112	1,393	10,793	11,717
Percent	100.0%	26.5%	6.6%	15.6%	85.6%	0.7%	5.4%	1.2%	9.5%	10.3%
Statewide Percent		24.7%	6.5%	12.9%	89.2%	2.2%	2.6%	3.6%	5.7%	8.2%

*Total for race may exceed 100% - Includes double-counts for those who indicated more than one race

Source: U.S. Census Bureau, State Legislative District Summary File

States provided updated boundaries in 2005/2006 as part of Phase 1 of the 2010 Census Redistricting Data Program.

